

# EXPLORATIONS: AN OPEN INVITATION TO BIOLOGICAL ANTHROPOLOGY

**Editors: Beth Shook, Katie Nelson, Kelsie Aguilera and Lara Braff**

American Anthropological Association  
Arlington, VA

2019

CC BY-NC 4.0 International, except where otherwise noted



ISBN – 978-1-931303-63-7

[www.explorations.americananthro.org](http://www.explorations.americananthro.org)

# Chapter 5: Meet the Living Primates

Stephanie Etting, Ph.D., Sacramento City College

## Learning Objectives

- Learn how primates are different from other mammals.
- Understand how studying non-human primates is important in anthropology.
- Identify different types of traits that we use to evaluate primate taxa.
- Describe the major primate taxa using their key characteristics.
- Understand your place in nature by learning your taxonomic classification.

One of the best parts of teaching anthropology for me is getting to spend time at zoos watching primates. What I also find interesting is watching people watch primates. I have very often heard a parent and child walk up to a chimpanzee enclosure and exclaim “Look at the monkeys!” The parent and child often don’t know that a chimpanzee is not a monkey, nor are they likely to know that chimpanzees share more than 98% of their DNA with us. What strikes me as significant is that, although most people do not know the difference between a monkey, an ape, and a lemur, they nonetheless recognize something in the animals as being similar to themselves. What people probably mean when they say “monkey” is actually “primate,” a term that refers to all organisms classified within the Order Primates and also the subject of this chapter. You may be wondering why a field dedicated to the study of humans would include the study of non-human animals. Because humans are primates, we share a wide range of behavioral and morphological traits with the other species who also fall into this group. In Chapter 2, you learned about the nature of Linnaean classification, the system we use for organizing life-forms. Here, we focus on the organization and diversity within the Order Primates. The term *Order Primates* dates back to 1758 when, in his tenth edition of *Systema Naturae*, Carolus Linnaeus put humans, “simia” (monkeys and apes), “lemurs” (lemurs and colugos), and some bats into one of eight groups of mammals. Linnaeus was wrong in including colugos (now in Order Dermoptera) and bats (now in Order Chiroptera), but the grouping of humans with the then-known non-human primates was significant in that by doing so Linnaeus formally recognized the affinities between humans and these non-human taxa. In fact, acknowledgment of similarities between humans and non-humans dates back far earlier than Linnaeus (see the Special Topic box), yet it was only more recently that we attained the genetic data to back up our intuition.

## WHAT IS A PRIMATE?

Primates are one of at least twenty Orders belonging to the Class Mammalia. All members of this class share certain characteristics, including, among other things, having fur or hair, producing milk from mammary glands, and being warm-blooded. There are three types of mammals: monotremes, marsupials, and placental mammals. Monotremes are the most primitive of the mammals, meaning they have retained more ancient traits than marsupials or placental mammals, and so, monotremes are characterized by some unusual traits. Monotremes, which include echidnas and duck-billed platypuses, lay eggs rather than give birth to live young. Once the young hatch, they lap up milk produced



from glands on the mother's abdomen rather than latch onto nipples. Marsupial mammals are those, like kangaroos and koalas, who internally gestate for a very short period of time and give birth to relatively undeveloped young. Joeys, as these newborns are called, complete their growth externally in their mother's pouch where they suckle. Lastly, there are placental mammals. Placental mammals internally gestate for a longer period of time and give birth to fairly well-developed young who are then nursed. Primates, including ourselves, belong to this last group. Among the diversity of mammalian orders alive today, primates are very likely one of the oldest. One genetic estimate puts the origin of primates at approximately 91 million years ago (mya), predating the extinction of the dinosaurs (Bininda-Emonds et al. 2007). Today, the Order Primates is a diverse group of animals that includes lemurs and lorises, tarsiers, monkeys of the New and Old Worlds, apes, and humans, all of which are united in sharing a suite of anatomical, behavioral, and life history characteristics. Before delving into the specific traits that distinguish primates from other animals, it is important to first discuss the different types of traits that we will encounter.

## Types of Traits

When evaluating relationships between different groups of primates, we use key traits that allow us to determine which species are most closely related to one another. Traits can be either primitive or derived. **Primitive** traits are those that a taxon has because it has inherited the trait from a distant ancestor. For example, all primates have body hair because we are mammals and all mammals share an ancestor hundreds of millions of years ago that had body hair. This trait has been passed down to all mammals from this shared ancestor, so all mammals alive today have body hair. **Derived** traits are those that have been more recently altered. This type of trait is most useful when we are trying to distinguish one group from another because derived traits tell us which taxa are more closely related to each other. For example, humans walk on two legs. The many adaptations that humans possess which allow us to move in this way evolved after humans split from the Genus *Pan*. This means that when we find fossil taxa that share derived traits for walking on two legs, we can conclude that they are likely more closely related to humans than to chimpanzees and bonobos.

There are a couple of other important points about primitive and derived traits that will become apparent as we discuss primate diversity. First, the terms *primitive* and *derived* are relative terms. This means that depending on what taxa are being compared, a trait can be either one. For example, in the previous section, body hair was used as an example for a primitive trait among primates. All mammals have body hair because we share a distant ancestor who had this trait. The presence of body hair therefore doesn't allow you to distinguish whether monkeys are more closely related to apes or lemurs because they all share this trait. However, if we are comparing mammals to birds and fish, then body hair becomes a derived trait of mammals. It evolved after mammals diverged from birds and fish, and it tells us that all mammals are more closely related to each other than they are to birds or fish. The second important point is that very often when one lineage splits into two, one taxon will stay more similar to the last common ancestor in retaining more primitive traits, whereas the other lineage will usually become more different from the last common ancestor by developing more derived traits. This will become very apparent when we discuss the two suborders of primates, Strepsirrhini and Haplorrhini. When these two lineages diverged, strepsirrhines retained more primitive traits (those present in the ancestor of primates) and haplorrhines developed more derived traits (became more different from the ancestor of primates).

There are two other types of traits that will be relevant to our discussions here: generalized and specialized traits. **Generalized traits** are those characteristics that are useful for a wide range of things. Having **opposable thumbs** that go in a different direction than the rest of your fingers is a very useful, generalized trait. You can hold a pen, grab a branch, peel a banana, or text your friends all thanks to your opposable thumbs. **Specialized traits** are those that have been modified for a specific purpose. These traits may not have a wide range of uses, but they will be very efficient at their job. Hooves in horses are a good example of a specialized trait. Horses cannot grasp objects with their hooves, but hooves allow horses to run very quickly on the ground on all fours. You can think of generalized traits as a Swiss Army

knife, useful for a wide range of tasks but not particularly good at any of one them. That is, if you're in a bind, then a Swiss Army knife can be very useful to cut a rope or fix a loose screw, but if you were going to build furniture or fix a kitchen sink, then you'd want specialized tools for the job. As we will see, most primate traits tend to be generalized.

## Primate Suite of Traits

The Order Primates is distinguished from other groups of mammals in having a suite of characteristics. This means that there is no individual trait that you can use to instantly identify an animal as a primate; instead, you have to look for animals that possess a collection of traits. What this also means is that each individual trait we discuss may be found in non-primates, but if you see an animal that has most or all of these traits, there is a good chance it is a primate.

One area in which the Order Primates is most distinguished from other organisms regards traits related to our senses, especially our vision. Compared to other animals, primates rely on vision as a primary sense. Our heavy reliance on vision is reflected in many areas of our anatomy and behavior. All primates have eyes that face forward with convergent (overlapping) visual fields. This means that if you cover one eye with your hand, you can still see most of the room with your other one. This also means that we cannot see on the sides or behind us as well as some other animals can. In order to protect the sides of the eyes from the muscles we use for chewing, all primates have at least a **postorbital bar**, a bony ring around the outside of the eye (Figure 5.1). Some primate taxa have more convergent eyes than others, so those primates need extra protection for their eyes. As a result, animals with greater orbital convergence will have a **postorbital plate** or **postorbital closure** in addition to the bar (Figure 5.1). The postorbital bar is a derived trait of primates, appearing in our earliest ancestors, which you will read more about in Chapter 8.

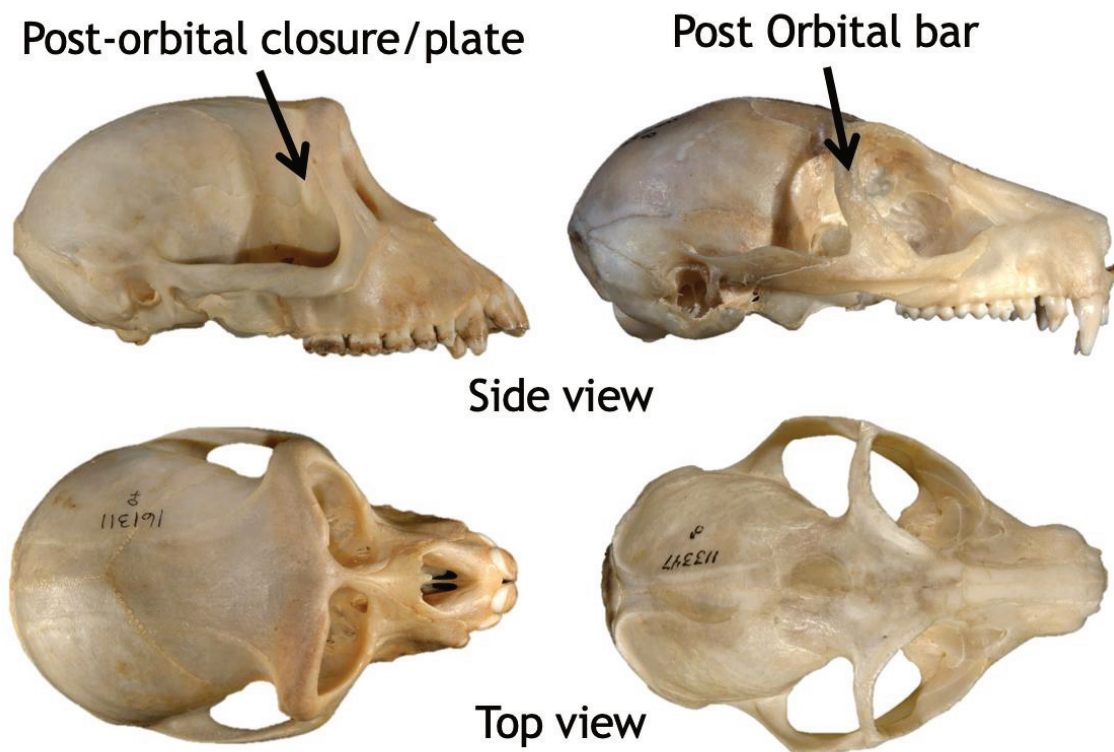


Figure 5.1 All primates have some form of bony protection around their eyes. Some have a postorbital bar only (right), but many have full postorbital closure, also called a postorbital plate, that completely protects the back of the eye socket (left).

Another important and distinctive trait of our Order is that many primates have **trichromatic color vision**, the ability to distinguish reds and yellows in addition to blues and greens. Interestingly, birds, fish, and reptiles are **tetrachromatic** (they can see reds, yellows, blues, greens, and even ultraviolet), but most mammals, including some primates, are only **dichromatic** (they see only in blues and greens). It is thought that the nocturnal ancestors of mammals benefited from seeing better at night rather than in color, and so dichromacy is thought to be the primitive condition for mammals. There is a lot of interest in why some primates would re-evolve trichromacy. Some theories revolve around food, arguing that the ability to see reds/yellows may allow primates who can see these colors to better detect young leaves (Dominy and Lucas 2001) or ripe fruits (Regan et al. 2001) against an otherwise green, leafy background. Color vision has also been suggested to be useful for detecting predators, especially big cats (Pessoa et al. 2014). Another theory emphasizes the usefulness of trichromacy in social and mate-choice contexts (Changizi et al. 2006). Thus far there is no consensus, as trichromatic color vision can be useful in many circumstances. There is also the added complication that sometimes dichromacy is more advantageous, as animals who are dichromatic are usually better at seeing through camouflage to find hidden items like foods or predators (Morgan et al. 1992). Therefore, investigating the evolution of color vision continues to be an interesting and ongoing area of research.

Primates also differ from other mammals in the size and complexity of our brains. All primates have brains that are larger than you would expect when compared to other mammals of the same size. On average, primates have brains that are twice as big for their body size as you would expect when compared to other mammals. Not unexpectedly, the visual centers of the brain are larger in primates and the wiring is different from that in other animals, reflecting our reliance on this sense. The neocortex, which is used for higher functions like consciousness and language in humans, as well as sensory perception and spatial awareness, is also larger in primates relative to other animals. In non-primates this part of the brain is often smooth, but in primates it is made up of many folds which increase the surface area. It has been proposed that the more complex neocortex of primates is related to diet, with fruit-eating primates having larger relative brain sizes than leaf-eating primates, due to the more challenging cognitive demands required to find and process fruits (Clutton-Brock and Harvey 1980). An alternative hypothesis argues that larger brain size is necessary for navigating the complexities of primate social life, with larger brains occurring in species who live in larger, more complex groups relative to those living in pairs or solitarily (Dunbar 1998). There seems to be support for both hypotheses, as large brains are a benefit under both sets of selective pressures.

The primate visual system uses a lot of energy, so primates have compensated by cutting back on other sensory systems, particularly our sense of smell. Compared to other mammals, primates have relatively reduced snouts. This is another derived trait of primates that appears even in our earliest ancestors. As we will discuss, there is variation across primate taxa in how much snouts are reduced. Those with a better sense of smell usually have poorer vision than those with a relatively dull sense of smell. The reason for this is that all organisms have a limited amount of energy to spend on running our bodies, so we make **evolutionary trade-offs**, because energy spent on one trait must mean cutting back on energy spent on another. With regards to primate senses, primates with better vision (more convergent eyes, better visual acuity, etc.) are spending more energy on vision and thus will have poorer smell (and a shorter snout). Primates who spend less energy on vision (less convergent eyes, poorer visual acuity, etc.) will have a better sense of smell (and a longer snout).

Primates also differ from other animals in our hands and feet. The Order Primates is a largely **arboreal** taxonomic group, which means that most primates spend a significant amount of their time in trees. As a result, the hands and feet of primates have evolved to move around in a three-dimensional environment. Primates have the generalized trait of **pentadactyly**—possessing five digits (fingers and toes) on each limb. Many non-primates, like dogs and horses, have fewer digits because they are specialized for high-speed, **terrestrial** (on the ground) running. Pentadactyly is also a primitive trait, one that dates back to the earliest four-footed animals. Primates today have opposable thumbs and, except humans, opposable big toes (Figure 5.2). **Opposable thumbs/toes** are a derived trait that appeared in the earliest primates about 55 million years ago. Having thumbs and big toes that go in a different direction from the rest of the fingers and toes allow primates to be excellent climbers in trees but also allow us to manipulate objects. Our ability to manipulate objects is further enhanced by the flattened nails on the backs of our fingers and toes that we possess in the place of the claws and hooves that many other mammals have. On the other side of our digits, we have sensitive **tactile pads** that allow us to have a fine sense of touch. Primates use this fine sense of touch for handling food and, in many species, grooming themselves and others. In primates, grooming is an important social currency, through which individuals forge and maintain social bonds. You will learn more about grooming in Chapter 6.



Figure 5.2 These drawings of the hands and feet of different primates clearly show the opposable thumbs and big toes, pentadactyly, flattened nails, and tactile pads that are characteristic of our Order.

Animals with large brains usually have extended life history patterns, and primates are no exception. **Life history** refers to the pace at which an organism grows, reproduces, ages, and so forth. Some animals grow very quickly and reproduce many offspring in a short time frame, but do not live very long. Other animals grow slowly, reproduce few offspring, reproduce infrequently, and live a long time. Primates are all in the “slow lane” of life history patterns. Compared to animals of similar body size, primates grow and develop more slowly, have fewer offspring per pregnancy, reproduce less often, and live longer. Primates also invest heavily in each offspring, a subject you will learn more about in the next chapter. With a few exceptions, most primates only have one offspring at a time. There is a group of small-bodied monkeys in the New World who regularly give birth to twins, and some lemurs are able to give birth to multiple offspring at a time, but these primates are the exception rather than the rule. Primates also reproduce relatively infrequently. The fastest-reproducing primates will produce offspring about every six months, while the slowest, the orangutan, reproduces only once every seven to nine years. This very slow reproductive rate makes the orangutan the slowest-reproducing animal on the planet! Primates are also characterized by having long lifespans. The group that includes humans and large-bodied apes has the most extended life history patterns among all primates, with some large-bodied apes estimated to live up to 58 years in the wild (Robson et al. 2006).

Lastly, primates share some behavioral and ecological traits. Primates are very social animals, and all primates, even those that search for food alone, have strong social networks with others of their species. Indeed, social networks in primates have been shown to be crucial in times of stress and to enhance reproductive success (Silk et al. 2009). Unlike many animals, primates do not migrate. This means that primates stay in a relatively stable area for their whole life, often interacting with the same individuals for their long lives. The long-term relationships that primates form with others of their species lead to complex and fascinating social behaviors, which you will read about in Chapter 6. Finally, non-human primates show a clear preference for tropical regions of the world. Most primates are found between the Tropic of Cancer and the Tropic of Capricorn, with only a few taxa living outside of these regions. You can see a summary of the primate suite of traits in Figure 5.3.

Primate suite of traits
<p>Convergent eyes</p> <p>Post-orbital bar</p> <p>Many have trichromatic color vision</p> <p>Short snouts</p> <p>Opposable thumbs and big toes</p> <p>Pentadactyly</p> <p>Flattened nails</p> <p>Tactile pads</p> <p>Highly arboreal</p> <p>Large brains</p> <p>Extended life histories</p> <p>Live in the tropics</p>

Figure 5.3 Primate Traits at a Glance: This table summarizes the suite of traits that differentiate primates from other mammals.

## KEY TRAITS USED TO DISTINGUISH BETWEEN PRIMATE TAXA

When trying to place primate species into specific taxonomic groups, we use a variety of dental characteristics, locomotor adaptations, and behavioral adaptations. Differences in these characteristics across groups reflect constraints of evolutionary history as well as variation in adaptations.

### Dental Characteristics

Teeth may not seem like the most exciting topic with which to start, but we can learn a tremendous amount of information about an organism from its teeth. First, teeth are vital to survival. Wild animals do not have the benefit of knives and forks, and so rely primarily on their teeth to process their food. Because of this, teeth of any species have evolved to reflect what that organism eats and so tell us directly about their diet. Second, variation in tooth size, shape, and number tells us a lot about an organism's evolutionary history. Some taxa have more teeth than others or different forms of teeth than others. Furthermore, differences in teeth between males and females can tell us about competition over mates (see Chapter 6). Lastly, teeth preserve really well in the fossil record. Enamel is hard, and there is little meat on jaws so carnivores and scavengers often leave them behind. Because of this, very often we find a lot of fossil jaws and teeth, and so we need to be able to learn as much as we can from those pieces.



If you've ever seen the jaws of a shark, dinosaur, or crocodile, you were probably struck by how sharp their teeth were and by the sheer number of teeth they had. What you probably didn't think about was that they also only have one type of tooth, referred to as **homodont**. In fact, one of the ways that mammals differ from other organisms is that we have multiple types of teeth (**heterodont**) that we use in different ways. We have **incisors**, which we use for slicing; we have **premolars** and **molars**, which we use for grinding up our food; and we have **canines**, which most primates (not humans) use as weapons against predators and each other. The sizes of canines vary across species and can often be **sexually dimorphic**, with male canines usually being larger than those of females. Non-human primates often **hone**, or sharpen, their canines by gnashing the teeth together to sharpen the sides. The upper canine sharpens on the first lower premolar and the lower canine sharpens on the front of the upper canine. As canines get larger, they require a space to fit in order for the jaws to close. This space between the teeth is called a **diastema** (Figure 5.4).

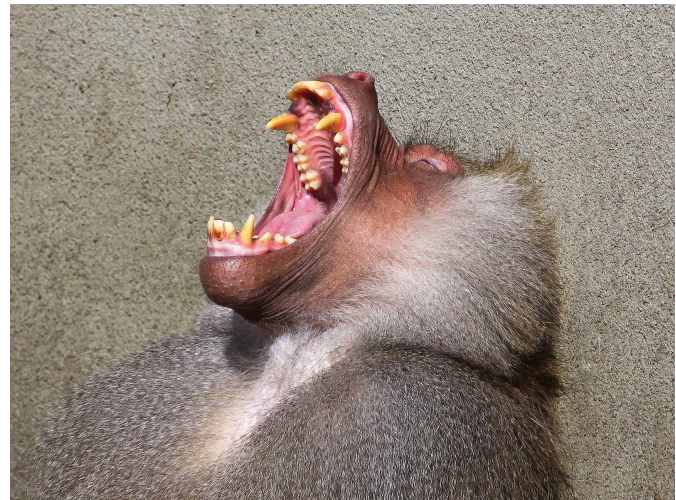


Figure 5.4 This open-mouthed Hamadryas baboon clearly demonstrates the diastema between his upper canine and front teeth. This space is taken up by his lower canine when he closes his mouth.

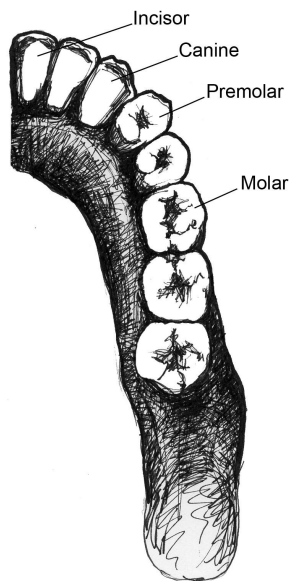


Figure 5.5 This drawing shows half of the human mandible. With the four types of teeth labeled, you can determine that the dental formula is 2:1:2:3.

As discussed before, primate taxa can vary in the numbers and forms of teeth they have. We determine the number of each type of tooth an organism has by its **dental formula**. The dental formula tells you how many incisors, canines, premolars, and molars are in each quadrant of the mouth (half of the top or bottom). For example, Figure 5.5 shows half of the lower teeth of a human. You can see that in half of the mandible, there are two incisors, one canine, two premolars, and three molars. This dental formula is written as 2:1:2:3. (The first number represents the number of incisors, followed by the number of canines, premolars, and molars). Some early fossil primates had a dental formula of 2:1:4:3, but among the living primates, none have more teeth than can be found in a 2:1:3:3 dental formula. Many have fewer teeth, however, and some have a different dental formula on the top than they do on the bottom.

To determine the dental formula, you need to be able to identify the different types of teeth. You can recognize incisors because they often look like spatulas with a flat, blade-like surface. Premolars and molars can be differentiated by the number of **cusps** that they have. Cusps are the little bumps (which in some species can be quite sharp) that you can feel with your tongue on the surface of your back teeth. Premolars are smaller than molars and, in primates, often have one or two cusps on them. Molars are bigger, with a larger chewing surface, and so have more cusps. Depending on the species of primate and whether you're looking at upper or lower teeth, molars can have between three and five cusps. There is even one extinct primate (*Oreopithecus*) who had six cusps on its molars. Molar cusps can also vary between taxa in how they are arranged, as you will

learn more about later in this chapter. Canines are often easy to distinguish because they are usually much longer and more conical than the other teeth. This is not always the case, however, as you will see when you read about the teeth of lemurs and lorises.

Teeth also tell us directly about an organism's diet. Primates are known to eat a wide range of plant parts, insects, gums, and, rarely, meat. While all primates eat a variety of foods, what differs among primates are the proportions

of each of these food items in the diet. That is, two primates living in the same forest may be eating the same foods but in vastly different proportions, and so we would categorize them as different dietary types. The most common dietary types among primates are those whose diets consist primarily of fruit (**frugivores**), those who eat mostly insects (**insectivores**), and those who eat primarily leaves (**folivores**). Fewer primates are **gummivores**, who specialize in eating gums and saps, so we will not discuss the adaptations for this dietary type in great detail.

## Frugivores

Plants want animals to eat their fruits because, in doing so, animals eat the seeds of the fruit and then disperse them far away from the parent plant. Because plants want animals to eat the fruit, plants often “advertise” fruits by making them colorful and easy to spot, full of easy-to-digest sugars that make them taste good—and, often, easy to chew and digest (not being too fibrous or tough). For these reasons, frugivores often do not need a lot of specialized traits to consume a diet rich in fruits (Figure 5.6a). Their molars usually have a broad chewing surface with low, rounded cusps (referred to as **bunodont** molars). Frugivores also often have large incisors for slicing through the outer coatings on fruit. Primates that eat fruit tend to have stomachs, colons, and small intestines that are intermediate in terms of size and complexity between insectivores and folivores (Chivers and Hladik 1980). They are also usually of intermediate body size between the other two dietary types. Because fruit does not contain protein, frugivores must supplement their diet with protein from insects and/or leaves. Some frugivorous primates get protein by eating seeds and so have evolved to have thicker enamel on their teeth to protect them from excessive wear.




Large incisors	Bunodont molars	Intermediate complexity of digestive tract
		

Figure 5.6a Frugivores are characterized by large incisors, bunodont molars, and digestive tracts that are intermediate in complexity between the other two dietary types.

## Insectivores

Insects can be difficult to find and catch but are not typically difficult to chew. As a result, insectivorous primates usually have small molars with pointed cusps that allow them to puncture the exoskeleton of the insects (Figure 5.6b). Once the outer shells of the insects are punctured, insects are not difficult to digest, so insectivores have simple stomachs and colons and a long small intestine. Nutritionally, insects provide a lot of protein and fat but are not plentiful enough in the environment to support large-bodied animals, so insectivores are usually the smallest of the primates.



Sharp, pointed molars	Simple digestive tract
	

Figure 5.6b Insectivores need sharp, pointed molar cusps in order to break through the exoskeletons of insects. Insects are easy to digest, so these primates have simple digestive tracts.

## Folivores

Unlike with fruits, plants do not want animals to eat their leaves. Leaves are the way plants get their energy from the sun, therefore, plants evolved to make their leaves very difficult for animals to eat. Leaves often have toxins in them, taste bitter, are very fibrous and difficult to chew, and are made of large cellulose molecules that are difficult to break down into usable sugars. Because of these defenses, animals who eat leaves need a lot of specialized traits (Figure 5.6c). Folivorous primates have broad molars with high, sharp cusps connected by **shearing crests**. These molar traits allow folivores to physically break down fibrous leaves when chewing. Folivores then have to chemically break down cellulose molecules into usable energy, so these animals need specialized digestive systems. Some folivores have complex stomachs with multiple compartments, but all leaf eaters have large, long intestines and special gut bacteria that can break up cellulose. Folivores are usually the largest bodied of all primates, and they spend a large portion of their day digesting their food, so they are often less active than frugivores or insectivores.




Smaller incisors	High, sharp molar cusps with shearing crests	Complex digestive tract
		

Figure 5.6c In order to derive energy from leaves, folivores have smaller incisors, high, sharp molar cusps connected by shearing crests and complex digestive tracts filled with specialized bacteria.

## Behavioral Adaptations

Chapter 6 is entirely dedicated to primate behavior, so only broad differences related to taxonomic classification will



be discussed here. These differences include variations in activity patterns, social grouping, and habitat use. Primate groups often differ in **activity patterns**—that is, whether they are active during the day (**diurnal**), at night (**nocturnal**), or through the 24-hour period (**cathemeral**). We also see variations among primate groups in social groupings: some taxa are primarily solitary, others live in pairs, and still others live in groups of varying sizes and compositions. Lastly, some taxa are primarily arboreal while others are more terrestrial.

## Locomotor Adaptations



Figure 5.7 An example of a vertical clinger and leaper. Note the longer legs than arms, long lower back and long fingers and toes. This vertical clinger and leaper doesn't have a tail, but most have long tails as well.

Finally, primate groups vary in their adaptations for different forms of **locomotion**, or how they move around. Living primates are known to move by vertical clinging and leaping, quadrupedalism, brachiation, and bipedalism. **Vertical clinging and leaping** is when an animal grasps a vertical branch with its body upright, pushes off with long hind legs and then lands on another vertical support branch (Figure 5.7). Animals who move in this way usually have longer legs than arms, long fingers and toes, and smaller bodies. Vertical clinger leapers also tend to have elongated ankle bones, which serve as a lever to help them push off with their legs and leap to another branch.



Figure 5.8 Here are examples of a typical quadrupedal primate. Note that the arms and legs are about the same length and the back is long and flexible. This is a terrestrial quadruped so the arms and legs are relatively long and the tail is shorter.

**Quadrupedalism** is the most common form of locomotion among primates (Figure 5.8). The term *quadrupedal* means to walk on all fours. Animals that move in this way usually have legs and arms that are about the same length and typically have a tail for balance. Arboreal quadrupeds usually have shorter arms and legs and longer tails, while terrestrial

quadrupeds have longer arms and legs and, often, shorter tails. These differences relate to the lower center of gravity needed by arboreal quadrupeds for balance in trees and the longer tail required for better balance when moving along the tops of branches. Terrestrial quadrupeds have longer limbs to help them cover more distance more efficiently. You will learn more specific anatomical features of quadrupedalism later in the chapter.



Figure 5.9 These are examples of a typical brachiator. Note the longer arms than legs, short back, and lack of a tail. You will read about more details of their anatomy later in the chapter.

The third form of locomotion seen in primates is **brachiation**, the way of moving you used if you played on “monkey bars” as a child. Brachiation involves swinging below branches by the hands (Figure 5.9). To be an efficient brachiator, a primate needs to have longer arms than legs, flexible shoulders and wrists, a short lower back, and no tail. You will learn more about the specifics of these traits when you learn about apes later in this chapter. Some primates move via **semi-brachiation**. These taxa also swing below branches but do not have all of the same specializations as brachiators. They have flexible shoulders, but their arms and legs are about the same length, useful because they are quadrupedal when on the ground. Semi-brachiators also use long **prehensile tails** as a third limb when swinging (Figure 5.10). The underside of the tail has a tactile pad, resembling your fingerprints, for better grip.



Figure 5.10 Spider monkeys, like the one shown here, are considered semi-brachiators who can swing below branches but use their tails as a third limb. On the ground they move via quadrupedal locomotion.

Lastly, humans move around on two feet, called **bipedalism**. Some primates will occasionally travel on two feet but do so awkwardly and never for long distances. Among mammals, only humans have evolved to walk with a striding gait on two legs as a primary form of locomotion. To move bipedally, humans need many specialized adaptations that will be discussed in detail in later chapters.

# PRIMATE DIVERSITY

As we begin exploring the different taxa of primates, it is important to keep in mind the hierarchical nature of taxonomic classification (discussed in Chapter 2) and how this relates to the key characteristics that will be covered. Figure 5.11 summarizes the major taxonomic groups of primates. If you locate humans on the chart, you can trace our classification and see all of the categories getting more and more inclusive as you work your way up to the Order Primates. What this means is that humans will have the key traits of each of those groups. It is a good idea to refer to the figure to orient yourself as we discuss each taxon.

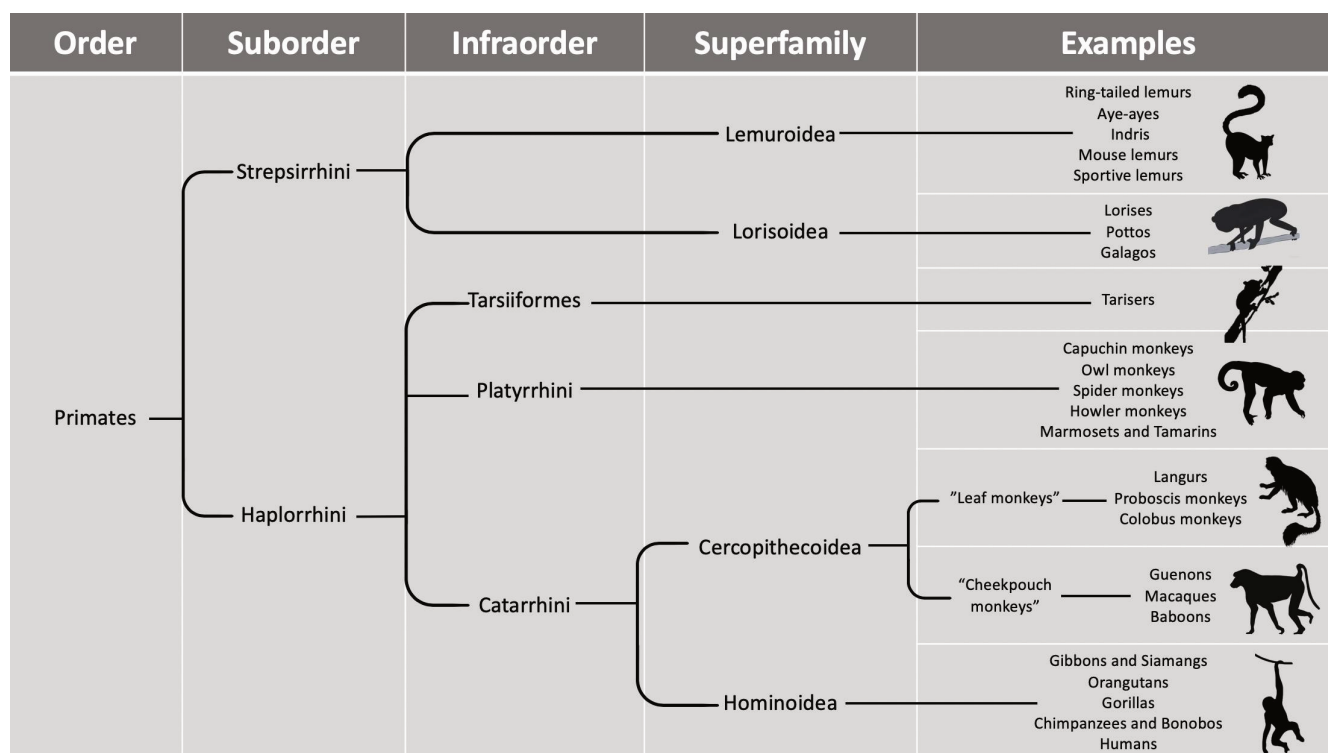


Figure 5.11 This taxonomy chart shows the major groups of primate taxa. Be sure to refer back to this chart as you read through the primate groups so that you can see how each group is related to one another.

## Ways of Organizing Taxa

Our goal in taxonomic classification is to place taxa into categories that reflect their clade relationships. A **clade** is a grouping of organisms that reflect a branch of the evolutionary tree, a grouping based on relatedness. Clade relationships are determined using derived traits shared by groups of taxa as well as genetic similarities. An example of a clade would be a grouping that includes humans, chimpanzees, bonobos, and gorillas. These taxa are in what is referred to as the **African clade** of hominoids. The African clade grouping reflects the fact that humans, chimpanzees, bonobos, and gorillas all share a more recent ancestor with each other than any of them do with other species—that is, we are on the same branch of the evolutionary tree. We know members of the African clade are most closely related based on derived morphological traits as well as genetic similarities. In this grouping, we exclude the orangutan, which is considered a member of the **Asian clade** of hominoids.

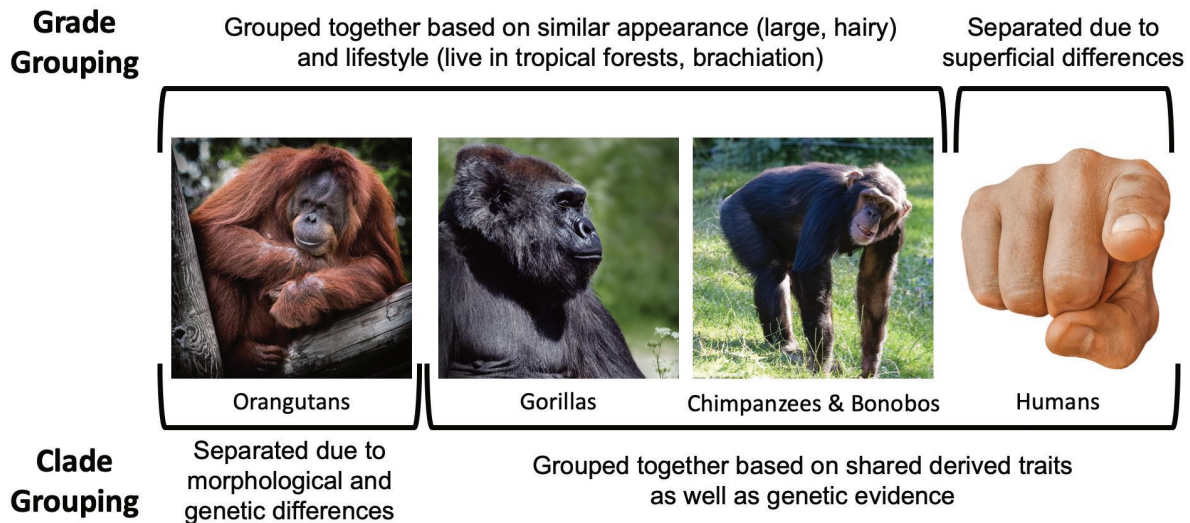


Figure 5.12 Grades vs. Clades: Grouping orangutans, gorillas, chimpanzees and bonobos but excluding humans is a grade classification based on overall similarity in appearance and lifestyle among the apes. We are most interested in groupings based on evolutionary relationships, so we use the clade classification in which humans are grouped with gorillas, chimpanzees, and bonobos. This grouping reflects our evolutionary relationships.

In contrast, **grades** are groupings that reflect levels of adaptation or overall similarity and not necessarily actual evolutionary relationships. An example of a grade would be placing orangutans, gorillas, bonobos, and chimpanzees into a group, and excluding humans. Grouping in this way is based on the superficial similarities of the apes in being large-bodied, having lots of body hair, living in tropical forests, using trees, and so on. According to these criteria, humans seem to be the unusual ones in that we differ in our morphology, behavior, and ecology. Separating humans from the other large-bodied apes is the system that was used historically. We now know that grouping orangutans, gorillas, bonobos, and chimpanzees and excluding humans does not accurately reflect our true evolutionary relationships (Figure 5.12), and because our goal in taxonomic classification is to organize animals to reflect their evolutionary relationships, we prefer to use clade classifications.

## Suborder Strepsirrhini



Figure 5.13 The foot of a ring-tailed lemur showing its grooming claw on the second digit.

The Order Primates is subdivided into Suborder Strepsirrhini and Suborder Haplorrhini, which, according to molecular estimates, split about 70–80 million years ago (Pozzi et al. 2014). The strepsirrhines include the groups commonly called lemurs, lorises, and galagos (Figure 5.14). Strepsirrhines differ from haplorrhines in many ways, most of which involve retaining primitive traits from the last common ancestor of primates. All of the traits discussed below are primitive traits, but strepsirrhines do have two key derived traits that evolved after they diverged from the haplorrhines. The two derived traits are the **grooming claw** (Figure 5.13), which is on the second digit of each foot, and the **tooth comb** (or **dental comb**), located on the lower, front teeth (Figure 5.15). In most strepsirrhines, there are six teeth in the toothcomb—the four incisors and the two canines. Other than the tooth comb, the teeth of strepsirrhines are fairly simple in not being particularly large or distinctive relative to haplorrhines.





Figure 5.14 (Clockwise from top right) sifaka, black-and-white ruffed lemur, loris, galago, slender loris, mouse lemur, aye-aye, and ring-tailed lemur.

Compared to haplorrhines, strepsirrhines rely more on nonvisual senses. Strepsirrhines have longer snouts than haplorrhines and get their name because they all have wet noses (**rhinariums**) like cats and dogs. The long snout and rhinarium reflect strepsirrhines' greater reliance on olfaction relative to haplorrhines. Indeed, many strepsirrhines use **scent marking**, rubbing scent glands or urine on objects in the environment to communicate with others. Additionally, many strepsirrhines have mobile ears that they use to locate insect prey and predators. As discussed earlier, there are trade-offs in sensory systems, so while strepsirrhines have a better sense of smell than haplorrhines, their visual adaptations are more primitive. Strepsirrhines have less convergent eyes than haplorrhines, and therefore all have postorbital bars whereas haplorrhines have full postorbital closure (Figure 5.1). All strepsirrhines have a **tapetum lucidum**, a reflective layer at the back of the eye that reflects light and thereby enhances the ability to see in low-light conditions. It is the same layer that causes your dog or cat to have "yellow eye" when you take photos of them with the flash on. It is thought to be primitive among mammals as a whole.

Strepsirrhines also differ from haplorrhines in some aspects of their ecology and behavior. The majority of strepsirrhines are solitary, traveling alone to search for food, although some taxa are more social. Most strepsirrhines are also nocturnal and arboreal. Strepsirrhines are, on average, smaller than haplorrhines, and so many more of them have a diet consisting of insects and fruit, with few taxa eating primarily leaves. Lastly, most strepsirrhines are good at leaping, with several taxa specialized for vertical clinging and leaping. In fact, among primates, all but one of the vertical clinger leapers are in the Suborder Strepsirrhini.

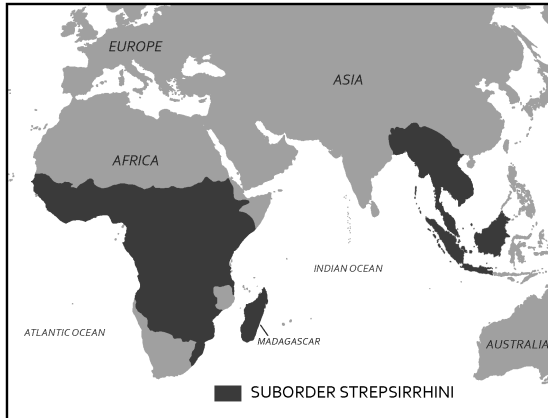


Figure 5.16 Geographic distribution of living strepsirrhines. Lemurs live only on the island of Madagascar, while their relatives the lorises and galagos live across Central Africa and South and Southeast Asia.

Strepsirrhines can be found all across the Old World: in Asia, Africa, and on the island of Madagascar (Figure 5.16). The Suborder Strepsirrhini is divided into two groups: (1) the lemurs of Madagascar and (2) the lorises, pottos, and galagos of Africa and Asia. By molecular estimates, these two groups split about 65 million years ago (Pozzi et al. 2014).

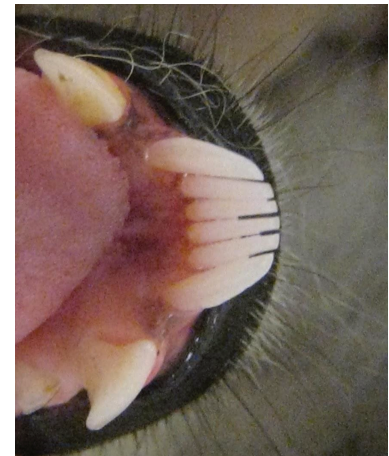


Figure 5.15 The lower front teeth of a ring-tailed lemur showing a tooth comb. Note that there are six teeth in the tooth comb, four incisors and two canines. The teeth that superficially look like canines are actually premolars.

## Lemurs of Madagascar

Madagascar is an island off the east coast of Africa, and it is roughly the size of California, Oregon, and Washington combined. It has been separated from Africa for about 130 million years and from India for about 85 million years, which means it was already an island when strepsirrhines got there approximately 60–70 million years ago. Only a few mammal species ever reached Madagascar, and so when lemurs arrived they were able to flourish into a variety of forms.

The lemurs of Madagascar are much more diverse compared to their mainland counterparts, the lorises and galagos. Malagasy strepsirrhines display a variety of activity patterns. While many species are nocturnal, plenty of others are diurnal or cathemeral. They range in body size from the smallest of all primates, the mouse lemur, some species of which weigh a little over an ounce (Figure 5.14), up to the largest of all strepsirrhines, the indri, which weighs up to about 20 pounds (Figure 5.17). Lemurs include species that are insectivorous, frugivorous, and folivorous. A couple of members of this group have specialized in more unusual diets for primates. These include the gummivorous fork-marked lemurs as well as bamboo lemurs, who are able to metabolize the cyanide in bamboo. The most unusual lemur is the aye-aye, which you can see depicted in Figure 5.14. This nocturnal lemur exhibits traits not seen in any other primate, including having rodent-like front teeth that grow continuously and a long-bony middle finger that it uses to fish grubs out of wood. It has a very large brain compared to other strepsirrhines, which it fuels with a diet that includes bird's eggs and other animal matter. Based on genetic estimates and morphological studies, it is believed that aye-ayes were the first lemurs to separate from all of the other



Figure 5.17 Indris, the largest of the lemurs. These folivorous lemurs are vertical clingers and leapers and live in pairs.

strepsirrhines and so have been evolving on their own since around the time strepsirrhines got to Madagascar (Matsui et al. 2009).

Lemurs are also diverse in terms of behavior. Many Malagasy strepsirrhines are solitary foragers, but some live in pairs, others in small groups, some in larger groups, and some, like the red-ruffed lemur, are now known to live in complex social groups that are unlike what we see in any other primates (Vasey 2006). It is also among the lemurs that we see some of the best vertical clingers and leapers. Many lemurs are quadrupedal, but even the quadrupedal lemurs are quite adept at leaping. Malagasy strepsirrhines also exhibit a few unusual traits. They are highly seasonal breeders, often mating only during a short window, once a year (Wright 1999). Female ring-tailed lemurs, for example, only come into estrus one day a year for a mere six hours. Malagasy strepsirrhines are also unusual in that females are socially dominant. In most primates, males dominate females because they are typically larger and exhibit greater aggression, but in lemur groups, males and females are usually the same size and females have priority access to resources over males.

## Lorises, Pottos, and Galagos of Asia and Africa

Unlike the lemurs of Madagascar, lorises, pottos, and galagos live in areas where they share their environments with monkeys and apes, who often eat similar foods. Lorises live across South and Southeast Asia, while pottos and galagos live across Central Africa. Because of competition with larger-bodied monkeys and apes, mainland strepsirrhines are more restricted in the niches they can fill in their environments and so are not as diverse as the lemurs of Madagascar.



All strepsirrhines in Africa and Asia are nocturnal and solitary. Their body sizes don't range as greatly as the lemurs, and neither do their diets. For the most part, the diet of lorises, pottos, and galagos consist of fruits and insects. A couple of species eat more gum, but overall the diet of this group is fairly narrow when compared to the Malagasy lemurs. Lorises and pottos are known for being slow, quadrupedal climbers, moving quietly through the forests to avoid being detected by predators (Figure 5.18). Because they are not fast moving, these strepsirrhines have developed alternative defenses against predators. Lorises, for example, eat a lot of caterpillars, which makes their saliva slightly toxic. Loris mothers will then bathe their young in this toxic saliva, thus making the babies unappealing to predators. In comparison to the slow-moving lorises and pottos, galagos are active quadrupedal runners and leapers that scurry about the forests at night. Galagos make distinctive calls that sound like a baby crying, which has led to their nickname "bushbabies." Figure 5.19 summarizes the key differences between these two groups of strepsirrhines.

*Figure 5.18 This slow loris, like all others in this taxonomic group, is solitary and nocturnal, with a diet heavy in insects and fruit.*



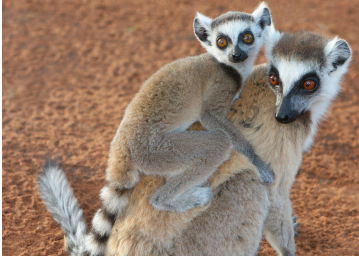

		
	<b>Lemurs</b>	<b>Lorises, Pottos and Galagos</b>
<b>Geographic range</b>	Madagascar	South and Southeast Asia Central Africa
<b>Activity patterns</b>	Diurnal, nocturnal or cathemeral	Nocturnal
<b>Dietary types</b>	Insectivore, frugivore or folivore	Insectivore, frugivore
<b>Social groupings</b>	Solitary, pairs, or small to large groups	Solitary
<b>Forms of locomotion</b>	Vertical clinger leapers, quadrupedal	Slow quadrupedal climbers and active quadrupedal runners

Figure 5.19 Strepsirrhini at a glance: This table summarizes the key differences between the two groups of strepsirrhines.

## Suborder Haplorrhini

When the strepsirrhini and haplorrhini split from one another, strepsirrhines retained more primitive traits (those likely present in the last common ancestor), while haplorrhines became quite different, developing many derived traits. Thus, all of the traits discussed below are considered derived traits.

As mentioned earlier, the visual systems of haplorrhines are more developed than those of strepsirrhines. Many haplorrhines are trichromatic and, with one exception that will be discussed shortly, all have full postorbital closure (Figure 5.1). This increase in bony closure around the eye protects the more convergent eyes that haplorrhines possess. Haplorrhines also evolved to have a **fovea**, a depression in the retina at the back of the eye containing concentrations of cells that allow us to see things very close up in great detail. The heavier reliance on vision over olfaction is also reflected in the shorter snouts ending with the **dry nose** (no rhinarium) of haplorrhines. All but two genera of living haplorrhines are active during the day, so this group lacks the tapetum lucidum which is so useful to nocturnal species. On average, haplorrhines also have larger brains relative to their body size when compared with strepsirrhines.

The Haplorrhini differ from the Strepsirrhini in aspects of ecology and behavior as well. Haplorrhines are generally larger than strepsirrhines, and so we see many more species that are folivorous and frugivorous, and fewer that are insectivorous. This dietary difference is reflected in the teeth of haplorrhines, which are broader with more surface area for chewing. The larger body size of this taxon also influences locomotion. Only one haplorrhine is a vertical clinger and leaper. Most members of this suborder are quadrupedal, with one subgroup specialized for brachiation. A few haplorrhine taxa are **monomorphic**, meaning males and females are the same size, but many members of this group show moderate to high sexual dimorphism in body size and canine size. Haplorrhines also differ in social behavior. All but two haplorrhines live in groups, which is very different from the primarily solitary strepsirrhines. Differences between the two suborders are summarized in Figure 5.20.





	 <p><b>Suborder Strepsirrhini</b></p>	 <p><b>Suborder Haplorrhini</b></p>
<b>Sensory adaptations</b>	<p>Rhinarium Longer snout Eyes less convergent Post-orbital bar Tapetum lucidum Mobile ears</p>	<p>No rhinarium Short snout Eyes more convergent Post-orbital plate No tapetum lucidum Many are trichromatic Fovea</p>
<b>Dietary differences</b>	Mostly insectivores and frugivores, few folivores	Few insectivores, mostly frugivores and folivores
<b>Activity patterns and Ecology</b>	<p>Mostly nocturnal, few diurnal or cathemeral Almost entirely arboreal</p>	<p>Only two are nocturnal, rest are diurnal Many arboreal taxa, also many terrestrial taxa</p>
<b>Social groupings</b>	Mostly solitary, some pairs, small to large groups	Only two are solitary, all others live in pairs, small to very large groups
<b>Sexual dimorphism</b>	Minimal to none	Few taxa have little/none, many taxa show moderate to high dimorphism

Figure 5.20 Suborders at a glance: This table summarizes the key differences between the two primate suborders.

Suborder Haplorrhini is divided into three infraorders: Tarsiiformes, which includes the tarsiers of Asia; Platyrrhini, which includes the New World monkeys of Central and South America; and Catarrhini, a group that includes the Old World monkeys and apes of Asia and Africa, as well as humans. According to molecular estimates, tarsiers split from the other haplorrhines close to 70 million years ago, and platyrrhini split from catarrhini close to 46 million years ago (Pozzi et al. 2014).

## Infraorder Tarsiiformes of Asia



Figure 5.21 Tarsiers are the only living representatives of this Infraorder.

Today, the Infraorder Tarsiiformes includes only one genus, *Tarsius* (Figure 5.21). Tarsiers are small-bodied primates that live in Southeast Asian forests (Figure 5.22) and possess an unusual collection of traits that have led to some debate about their position in the primate taxonomy. They are widely considered members of the haplorrhine group because they share several key derived traits with monkeys, apes, and humans,

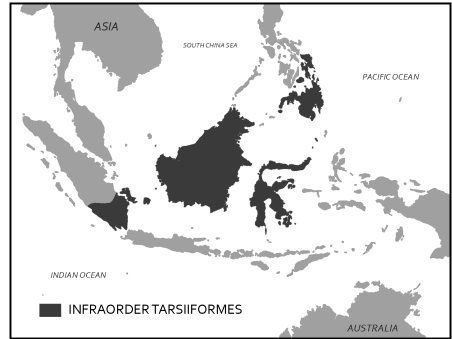


Figure 5.22 Tarsiiformes can be found in tropical forests of Southeast Asia.

including dry noses, a fovea, not having a tapetum lucidum, and having eyes that are close together. Tarsiers also have some traits that are more like strepsirrhines and some that are unique. Tarsiers are the only haplorrhine that are specialized vertical clinger leapers, a form of locomotion only otherwise seen in some strepsirrhines. Tarsiers actually get their name because their ankle (tarsal) bones are elongated to provide a lever for vertical clinging and leaping. Tarsiiformes are also small, with most species weighing between 100 and 150 grams. Like strepsirrhines, tarsiers are nocturnal, but because they lack a tapetum lucidum, tarsiers compensate by having enormous eyes. In fact, each eye of a tarsier is larger than its brain. These large eyes allow enough light in for tarsiers to still be able to see well at night without the reflecting layer in their eyes. To protect their large eyes, tarsiers have a partially closed postorbital plate that is somewhat intermediate between the postorbital bar of strepsirrhines and the full postorbital closure of other haplorrhines (Figure 5.23). Tarsiers have different dental formulas on their upper and lower teeth. On the top, the dental formula is 2:1:3:3, but on the bottom it is 1:1:3:3. Other unusual traits of tarsiers include having two grooming claws on each foot and the ability to rotate their heads around 180 degrees, a trait useful in locating insect prey. The tarsier diet is considered **faunivorous** because it consists entirely of animal matter, making them the only primate not to eat any vegetation. They are also only one of two living haplorrhines to be solitary, the other being the orangutan. Most tarsiers are not sexually dimorphic, like strepsirrhines, although males of a few species are slightly larger than females.

Two alternative classifications have emerged due to the unusual mix of traits that tarsiers have. Historically, tarsiers were grouped with lemurs, lorises, and galagos into a suborder called Prosimii. This classification was based on tarsiers, lemurs, lorises, and galagos all having grooming claws and similar lifestyles (e.g., small, nocturnal, more leaping locomotion, diet heavy in insects, more solitary). Monkeys, apes, and humans were then separated into a suborder called the Anthropoidea. These suborder groupings were based on grade rather than clade. Today, most people use Suborders Strepsirrhini and Haplorrhini, which are clade groupings based on the derived traits that tarsiers share with monkeys, apes, and humans (e.g., more postorbital closure, fovea, no tapetum lucidum, dry nose). The Strepsirrhini/Haplorrhini dichotomy is also supported by the genetic evidence that indicates tarsiers are more closely related to monkeys, apes, and humans (Jameson et al. 2011). Figure 5.24 summarizes the unusual mix of traits seen in tarsiers.



Figure 5.23 Skull of a tarsier showing very large eye sockets and partially closed postorbital plates.

Like Strepsirrhini	Unique	Like Haplorrhini
Very small Nocturnal Highly insectivorous Solitary Vertical clinger-leapers Little/no sexual dimorphism	Two grooming claws 2:1:3:3/1:1:3:3 dental formula Do not eat vegetation Can rotate their heads nearly 180 degrees	Almost full PO closure More convergent eyes No tapetum lucidum No rhinarium Genetic evidence Fovea

Figure 5.24 Tarsiers at a glance: Tarsiers have a mix of traits that lead to debate about their classification. Some of their traits superficially resemble strepsirrhines, but they share many derived traits with haplorrhines. They also possess unique characteristics that are unlike any other primates.

## Infraorder Platyrrhini of Central and South America



Figure 5.25 Geographic distribution of the platyrrhines across Central and South America. New World monkeys are the only naturally occurring non-human primates in the Americas.

The platyrrhines, also commonly called New World monkeys, are the only non-human primates in Central and South America (Figure 5.25) and so, like the lemurs of Madagascar, have diversified into a variety of forms in the absence of competition. Infraorder Platyrrhini get their name from their distinctive nose shape. “Platy” means flat and “rhini” refers to noses and, indeed, New World monkeys have noses that are flat and wide, with nostrils that are far apart, facing outward, and usually round in shape (Figure 5.26). This nose shape is very different from what we see in catarrhines, the group that includes Old World monkeys, apes, and humans.

On average, Platyrrhini are smaller and less sexually dimorphic than catarrhines, and they have retained the more primitive primate dental formula of 2:1:3:3. Platyrrhines are also all highly arboreal, whereas many Old World monkeys and apes spend

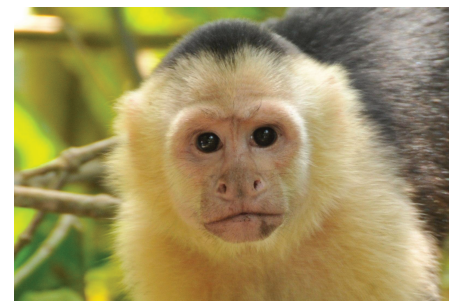


Figure 5.26 A capuchin monkey demonstrating a typical platyrrhine nose shape with round nostrils pointing outward on a flat nose.

significant time on the ground. The New World monkeys also differ in having less well-developed vision. This is reflected in the wiring in the visual system of the brain but also in their **polymorphic color vision**. The genes that enable individuals to distinguish reds and yellows from blues and greens are on the X

chromosome. Different genes code for being able to see different wavelengths of light so to distinguish between them you need to be heterozygous for seeing color. In New World monkeys, each X chromosome carries the genes for seeing one wavelength. This means that male platyrrhines (having only one X chromosome) are always dichromatic. Female platyrrhines can be dichromatic (if they are homozygous for the same version of the color vision gene) or trichromatic (if they are heterozygous) (Kawamura et al. 2012). We currently know of two exceptions to this pattern among platyrrhines. Owl monkeys, which are nocturnal, are **monochromatic**, meaning that they cannot distinguish any colors. The other exception are Howler monkeys, which have evolved to have two color vision genes on each X chromosome. This means that both male and female howler monkeys are able to see reds and yellows. As we will discuss, all Old World monkeys, apes, and humans are trichromatic.

Platyrrhines include the smallest of the monkeys, the marmosets and tamarins (Figure 5.27). These small monkeys, all of which weigh less than 1 kilogram, live in cooperative family groups, wherein usually only one female reproduces and everyone else helps carry and raise the offspring. They are unusual primates in that they regularly produce twins. The diet of marmosets and tamarins largely consists of gums and saps, so these monkeys have evolved claw-like nails that enable them to cling to the sides of tree trunks like squirrels as well as special teeth that allow them to gnaw through bark. They also have one fewer molar than other platyrrhines, giving them a dental formula of 2:1:3:2.

The largest of the platyrrhines are a family that include spider monkeys, woolly spider monkeys, woolly monkeys, and howler monkeys (Figure 5.28). This group of monkeys can weigh up to 9–15 kg and have evolved prehensile tails that can hold their entire body weight. It is among this group that we see semi-brachiators, like the spider monkey (Figure 5.10). To make them more efficient in this form of locomotion, spider monkeys evolved to not have thumbs so that their hands work more like hooks that can easily let go of branches while swinging. Howler monkeys are another well-known member of this group, earning their name due to their loud calls, which can be heard for miles away. To make these loud vocalizations, howler monkeys have a specialized vocal system that includes a large larynx and hyoid bone. Howler monkeys are the most folivorous of the platyrrhines and are known for spending a large portion of their day digesting their food.

There are many other monkeys in the New World, including the gregarious capuchins (Figure 5.26) and squirrel monkeys, the pair-living titi monkeys, and the nocturnal owl monkeys. There are also the seed-eating monkeys such as saki monkeys and uakaris. In many areas across Central and South America, multiple different species of platyrrhine will share the forests, and some species will even travel together in associations that you will learn about in Chapter 6. According to molecular evidence, the diversity of platyrrhines that we see today seems to have originated about 25 million years ago (Schneider and Sampaio 2015). Figure 5.29 summarizes the key traits of platyrrhines relative to the other infraorders of Haplorrhini.





Figure 5.27 (Clockwise from top-right) golden-headed lion tamarin, pygmy marmoset, Goeldi's monkey, bare-eared marmoset, emperor tamarin, and common marmoset.



Figure 5.28 (Clockwise from top right) howler monkey, woolly monkey, woolly spider monkey, and spider monkey.

Platyrrhini traits
<p>Flat nose with rounded nostrils pointing to the side</p> <p>Highly arboreal</p> <p>Less sexually dimorphic on average</p> <p>2:1:3:3 dental formula*</p> <p>Polymorphic color vision*</p>

Figure 5.29 Platyrrhini at a glance: Summary of the key traits we use to distinguish platyrrhines. Traits indicated with an \* are those with exceptions detailed in the text.

## Infraorder Catarrhini of Asia and Africa

Infraorder Catarrhini includes Old World monkeys, apes, and humans. Non-human catarrhines are found all over Africa and South and Southeast Asia, with some being found as far north as Japan. The most northerly and southerly catarrhines are from the superfamily that includes the Old World monkeys. In contrast, apes are less tolerant of drier, more seasonal environments and so have a relatively restricted geographic range.

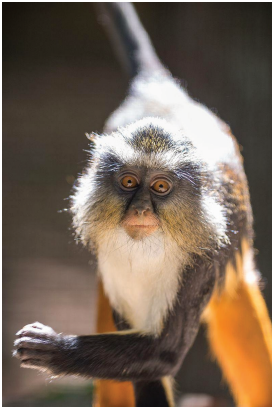


Figure 5.30 A Wolf's guenon demonstrating a typical catarrhine nose with teardrop-shaped nostrils close together and pointed downward.

When compared to the other haplorrhine infraorders, catarrhines are distinguished by several characteristics. Catarrhines have a distinctive nose shape, with teardrop-shaped nostrils that are close together and point downward (Figure 5.30). Old World monkeys, apes, and humans also have one fewer premolar than most other primates, giving us a dental formula of 2:1:2:3 (Figure 5.31). On average, catarrhines are the largest and most sexually dimorphic group of primates. Gorillas are the largest of all living primates, with males weighing up to 220 kg. The most sexually dimorphic of all primates are mandrills. Mandrill males not only have much more vibrant coloration than mandrill females but also have larger canines and can weigh up to three times more (Setchell et al. 2001). The larger body size of catarrhines is related to the more terrestrial lifestyle of many members of this infraorder. In fact, the most terrestrial of living primates can be found in this group. Among all primate taxa, vision is the most developed in catarrhines. Catarrhines independently evolved the same adaptation as howler monkeys in having each X chromosome with sufficient genes to distinguish both reds and yellows, so all catarrhines are trichromatic. Trichromatic color vision is particularly useful to catarrhines, which are all diurnal.

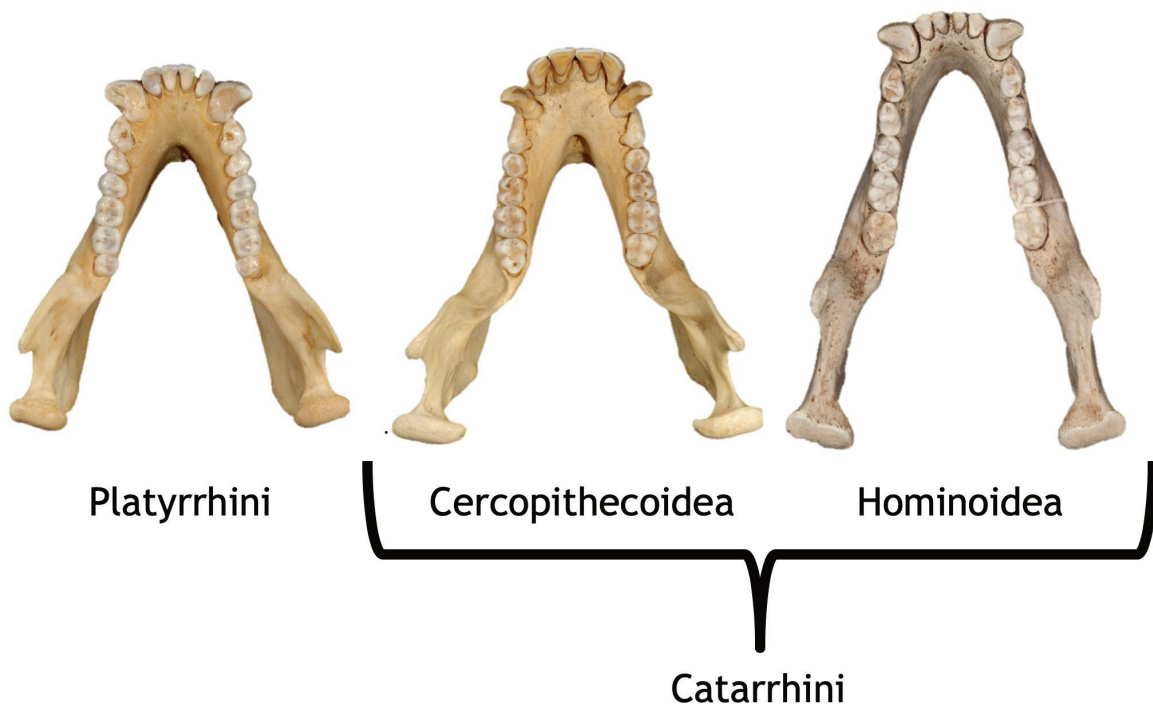


Figure 5.31 Catarrhines are distinguished in that they only have two premolars compared to the three premolars seen in most other primate taxa, including the platyrrhines shown here for comparison. In these images you can also see one of the derived traits of cercopithecoids, their bilophodont molars, which differ from the more primitive Y-5 molars that apes and humans have.

Infraorder Catarrhini is divided into two superfamilies: Superfamily Cercopithecoidea, which includes Old World monkeys, and Superfamily Hominoidea, which includes apes and humans. Molecular estimates place the split between cercopithecoids and hominoids at about 32 million years ago (Pozzi et al. 2014), which fits well with the fossil record showing evidence of the lineages by about 25 million years ago (see Chapter 8 on primate evolution).

## Superfamily Cercopithecoidea of Africa and Asia

Compared to hominoids, Old World monkeys have a more primitive quadrupedal body plan (discussed later in Figure 5.39), but they do have a couple of derived traits shared by all members of this group. Cercopithecoidea have **bilophodont** molars (“bi” meaning two, “loph” referring to ridge, and “dont” meaning tooth). Referring back to Figure 5.31, you will see how the molars of cercopithecoids have four cusps arranged in a square pattern and have two ridges connecting them. It is thought that this molar enabled Old World monkeys to eat a wide range of foods, thus allowing them to live in habitats that apes cannot. The other key derived trait that all cercopithecoids share is having **ischial callosities** (Figure 5.32). The ischium is the part of your pelvis that you are sitting on right now (see Appendix A: Osteology). In Old World monkeys, this part of the pelvis has a flattened surface that, in living animals, will have callused skin over it. These function as seat pads for cercopithecoids, who often sit above branches when feeding and resting.

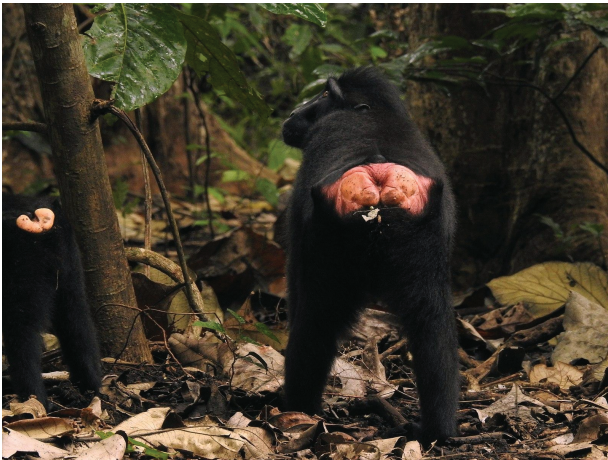


Figure 5.32 The second derived trait of cercopithecoids are their ischial callosities, shown here on a crested black macaque.

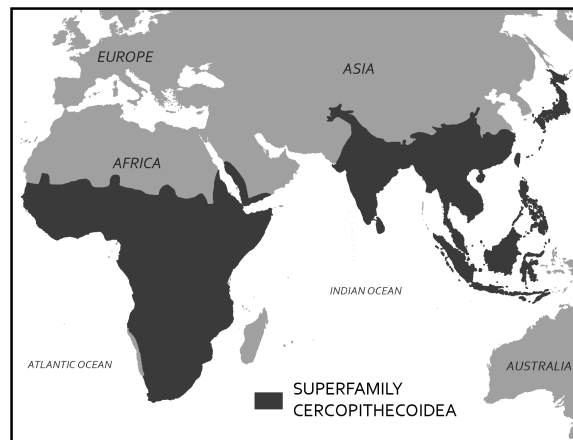


Figure 5.33 Geographic distribution of the Old World monkeys. Catarrhines have the widest geographic distribution due to the success of cercopithecoid monkeys who are found all across Africa and Asia.



Figure 5.34 Silver leaf monkey infants are born with orange fur, dramatically contrasting the adult coat color of their mothers. After a few months, the infants gradually change color to that of their parents.

The cercopithecoid monkeys are the most geographically widespread group of non-human primates (Figure 5.33). Since their divergence from hominoids, this monkey group has increased in numbers and diversity. In part, their success over hominoids is due to the faster reproductive rates of cercopithecoids relative to hominoids. On average, Old World monkeys will reproduce every one to two years, whereas hominoids will reproduce once every four to nine years, depending on the taxon.

Cercopithecoidea is split into two groups, the leaf monkeys and the cheek-pouch monkeys. Both groups coexist in Asia and Africa; however, the majority of leaf monkey species live in Asia with only a few taxa in Africa. In contrast, only one genus of cheek-pouch monkey lives in Asia, and all the rest of them in Africa. As you can probably guess based on their names, the two groups differ in terms of diet. Leaf monkeys are primarily folivores, with some species eating a significant amount of seeds. Cheek-

pouch monkeys tend to be more frugivorous or omnivorous, with one taxon, geladas, eating primarily grasses. The two groups also differ in some other

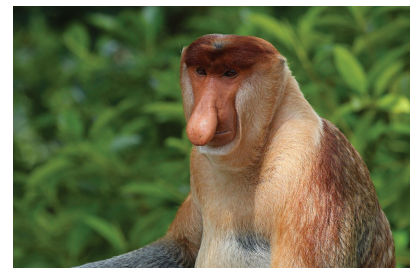


Figure 5.35 Proboscis monkeys are one of several “odd-nosed” leaf monkeys. Male proboscis monkeys, like the one shown here, have large, pendulous noses. Female proboscis monkey noses are much smaller; in this species nose size is a sexually dimorphic trait.



interesting ways. Leaf monkeys tend to produce infants with **natal coats**—infants whose fur is a completely different color from their parents (Figure 5.34). Leaf monkeys are also known for having odd noses (Figure 5.35), and so they are sometimes called “odd-nosed monkeys.” Cheek-pouch monkeys are able to pack food into their cheek pouches (Figure 5.36), thus allowing them to move to a location safe from predators or aggressive individuals of their own species where they can eat in peace.



Figure 5.36 This bonnet macaque has filled its cheek pouches with food. This adaptation is useful in transporting food to a safer location to eat.

## SPECIAL TOPIC: PRIMATES IN CULTURE AND RELIGION



Figure 5.37 Because of important monkey-like figures in the Hindu religion, macaques are protected in India and often live near temples where they are fed by local peoples.

In the introduction to this chapter, I mentioned the innate affinity that humans have toward non-human primates even when we do not fully understand our exact relationship to them. In fact, recognition of similarities between humans and other primates is very ancient, dating back far earlier than Linnaeus. For many of us, we only ever get to see primates in zoos and animal parks, but in many areas of the world, humans have coexisted with these animals for thousands of years. In areas where humans and primates have a long, shared history, non-human primates often play key roles in creation myths and cultural symbolism.

Hamadryas baboons feature significantly in Ancient Egyptian iconography. Ancient Egyptian deities and beliefs transformed over time, as did the role of hamadryas baboons. Early on, baboons were thought to represent dead ancestors, and one monkey deity, called Babi or Baba, was thought to feed off of dead souls. Later, baboons became the totem animal for Thoth, the deity of science, writing, wisdom, and measurement, who also wrote the book of the dead. Sunbathing hamadryas baboons led ancient Egyptians to associate them with Ra, the sun god, who



was the son of Thoth. During mummification, human organs were removed and put into canopic jars, one of which was topped with the head of the baboon-headed god, Hapi. Hamadryas baboons were also often kept as pets, as depicted in hieroglyphics, and occasionally mummified as well.

On Madagascar, indris and aye-ayes play roles in the creation myths and omens of local people. There are many myths regarding the origins of indris and their relationship to humans, including one where two brothers living in the forest separated, with one brother leaving the forest and becoming a human while the other stayed in the forest to become the indri. Indris are considered sacred and are therefore protected, due to their similarities to humans in having long legs, no tail, and upright posture. Unfortunately, the aye-aye is not treated with the same reverence. Aye-ayes, due to their unusual appearance, are thought to be omens of death. They are usually killed when encountered because it is believed that someone will die if an aye-aye points at them.

In India, monkeys play a key role in the Hindu religion. Hanuman, who resembles a monkey, is a key figure in the Ramayana. Hanuman is thought to be a guardian deity, and so local monkeys like Hanuman langurs and macaques are protected in India (Figure 5.37). In Thailand, where Hinduism is also practiced, the Hindu reverence for monkeys extends to “monkey feasts,” where large quantities of food are spread out in gratitude to the monkeys for bringing good fortune.

The people of Japan have coexisted with Japanese macaques for thousands of years, and so monkeys play key roles in both of the major Japanese religions. In the Shinto religion, macaques are thought of as messengers between the spirit world and humans and monkey symbols are thought to be good luck. The other major religion in Japan is Buddhism, and monkeys play a role in symbolism of this religion as well. The “Three Wise Monkeys” who see no evil, speak no evil, and hear no evil derive from Buddhist iconography of monkeys.

In the New World, monkeys feature often in Mayan and Aztec stories. In the Mayan creation story, the Popol Vuh, the “hero brothers” are actually a howler monkey and a spider monkey, who represent ancestors of humans in the story. In the Aztec religion, spider monkeys are associated with the god of arts, pleasure, and playfulness. A spider monkey is also represented in a Peruvian Nazca geoglyph, a large design made on the ground by moving rocks.

In many of these regions today, the relationships between humans and non-human primates are complicated. The bushmeat and pet trades make these animals valuable at the expense of many animals’ lives, and in some areas, non-human primates have become pests who raid crop fields and consume valuable foods. All of this has led to the development of a new subarea of anthropology called **Ethnoprimatology**, which involves studying the political, economic, symbolic, and practical relationships between humans and non-human primates. This field highlights the particular challenges for humans of having to coexist with animals with whom we share so much in common. It also provides insight into some of the challenges facing primate conservation efforts (see Appendix A: Primate Conservation).

# Superfamily Hominoidea of Africa and Asia

The Superfamily Hominoidea of Africa and Asia (Figure 5.38) includes the largest of the living primates, apes and humans, but our superfamily differs from other primates in some other key ways as well. When compared to cercopithecoids, hominoids have more primitive teeth. Whereas Old World monkeys have bilophodont molars, hominoids have **Y-5 molars**, which feature five cusps separated by a “Y”-shaped groove pattern (Figure 5.31). The Y-5 molar was present in the common ancestors of hominoids and cercopithecoids, thus telling us it is the more primitive molar pattern of the two. Where hominoids differ the most from other primates, however, is in our body plans. This is due to the unusual form of locomotion that hominoids are adapted for, brachiation (Figure 5.39).

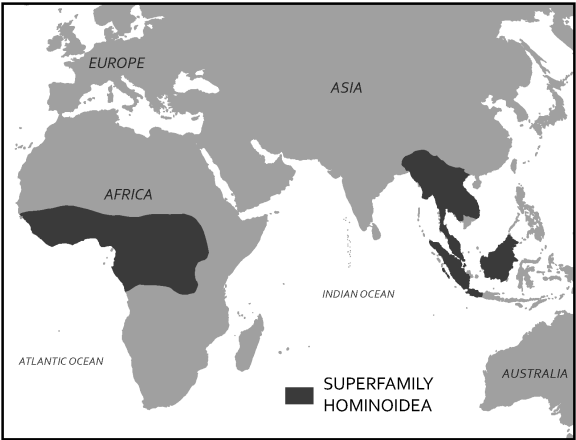


Figure 5.38 Geographic distribution of apes across Central and West Africa, and Southeast Asia. Hominoids overlap geographically with cercopithecoid monkeys but have a lower tolerance for seasonal environments and so are found only in tropical forests across these regions.

	Quadrupedalism	Brachiation
Arm length vs. leg length	About equal	Arms are longer
Shoulder position	More on the front	Out to the side
Ribcage shape	Deep front-to-back Narrow side-to-side	Shallow front-to-back Wide side-to-side
Length of lower back	Long	Short
Collar bone length	Short	Long
Ulnar olecranon process	Long	Short
Ulnar styloid process	Long	Short
Tail	Short to long	None

Figure 5.39 Quadrupedalism vs. brachiation: Summary of the key anatomical differences between a quadrupedal primate and one adapted for brachiation. To view and compare these traits using photos of bones, check out the interactive skeletal websites listed under the “Further Explorations” section at the end of this chapter.

To successfully swing below branches, many changes to the body needed to occur. The arms of a hominoid are much longer than the legs in order to increase reach, and the lower back is shorter and less flexible to increase control when swinging. The torso, shoulders, and arms of hominoids have evolved to increase range of motion and flexibility

(Figure 5.9). The clavicle, or collar bone, is longer in order to stabilize the shoulder joint out to the side, thus enabling us to rotate our arms 360 degrees. Our rib cages are wider side to side and shallower front to back than those of cercopithecoids and we do not have tails, as tails are useful for balance when running on all fours but not useful when swinging. Hominoids also have modified ulnae, one of the two bones in the forearm (see Appendix A: Osteology). At the elbow end of the ulna, hominoids have a short **olecranon process**, which allows for improved extension in our arms. At the wrist end of the ulna, hominoids have a short **styloid process**, which enables us to have very flexible wrists, a trait critical for swinging. Both the olecranon process and styloid process are long in quadrupedal animals who carry much of their weight on their forelimbs when traveling and who therefore need greater stability rather than flexibility in those joints.

Apes and humans also differ from other primates in behavior and life history characteristics. Hominoids all seem to show varying degrees of female dispersal at sexual maturity. Dispersal refers to leaving the area or group where an individual was born. As you will learn about in Chapter 6, it is more common that males leave. Indeed, some apes show males dispersing in addition to females, but the broader tendency for female dispersal in hominoids is a bit unusual among primates. Our superfamily is also characterized by the most extended life histories of all primates. All members of this group live a long time and take a long time to grow and start reproducing. Hominoids also reproduce much less frequently compared to cercopithecoid monkeys. The slow pace of this life history is likely related to why hominoids have decreased in diversity since they first evolved. In the past, hominoids were tremendously diverse in both geography and adaptations. Today, there are only five types of hominoids left: gibbons and siamangs, orangutans, gorillas, chimpanzees and bonobos, and humans.



Infraorder Catarrhini	
<p>Downward facing, tear-drop shaped nostrils, close together</p> <p>Arboreal and more terrestrial taxa</p> <p>On average, largest primates</p> <p>On average, most sexually dimorphic taxonomic group</p> <p>2:1:2:3 dental formula</p> <p>All trichromatic</p>	
 <p><b>Superfamily Cercopithecoidea</b></p>	 <p><b>Superfamily Hominoidea</b></p>
<p>Wide geographic distribution</p> <p>Bilophodont molars</p> <p>Ischial callosities</p> <p>Reproduce every 1-2 years</p>	<p>Tropical forests of Africa and Asia</p> <p>Y-5 molars</p> <p>Adaptations for brachiation</p> <p>Reproduce every 4-9 years</p>

Figure 5.40 Catarrhini at a glance: Summary of key traits of the Infraorder Catarrhini as well as the characteristics used to distinguish between the two superfamilies within this group.

## Family *Hylobatidae* of Southeast Asia



Figure 5.41 Siamangs are the largest of the *Hylobatidae* family. They are all black and, as you can see inflated in this photo, have a throat sac that they use to give loud calls.

The number of genera in this group has been changing in recent years, but the taxa included can broadly be discussed as gibbons and siamangs. Both are found across Southeast Asian tropical forests. These are the smallest of the hominoids and so are sometimes referred to as the “lesser apes.” Gibbons weigh, on average, about 13 pounds and tend to be more frugivorous, whereas siamangs are about twice the size of gibbons and are more folivorous. Unlike the larger-bodied apes (orangutans, chimps, bonobos, and gorillas) who make nests to sleep in every night, gibbons and siamangs will develop callused patches on their ischium resembling ischial callosities. There are many different gibbon species that vary in their coloration and markings. Siamangs, however, are all black with big throat sacs that are used in their exuberant vocalizations (Figure 5.41). Both gibbons and siamangs live in pairs with very little sexual dimorphism, although

males and females do differ in coloration in some species.

## *Pongo* of Southeast Asia

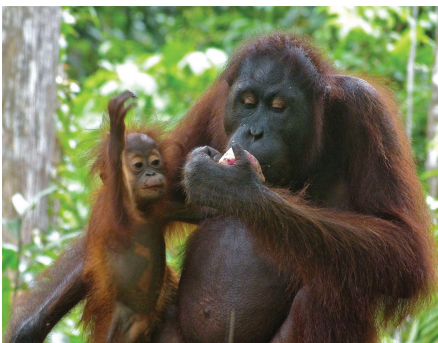


Figure 5.42a A female orangutan and her infant.

The Genus *Pongo* refers to orangutans. These large red apes are found on the islands of Borneo and Sumatra in Southeast Asia. There are two well-known species of orangutan, one on each island. Recently, a third, very rare species was discovered in Southern Sumatra (Nater et al. 2017). Orangutans are highly frugivorous but will supplement their diet with leaves and even bark when fruit is

less available. As mentioned earlier, orangutans are the only diurnal, solitary taxon among primates and are extremely slow to reproduce, producing only one offspring about every seven to nine years. They are highly sexually dimorphic (Figure 5.42), with fully developed, “flanged” males being approximately twice the size of females. These males have large throat sacs; long, shaggy coats; and cheek flanges. The skulls of male orangutans often feature a **sagittal crest**, which is believed to function as both additional attachment area for chewing muscles but also in sexual competition (Balolia



Figure 5.42b A flanged adult male. Male orangutans are about twice the size of females, and in these photos you can also see the sexual dimorphism in coat length, cheek flanges and throat sac in the male.



et al. 2017). An unusual feature of orangutan biology is **male bimaturism**. Male orangutans are known to delay maturation until one of the more dominant, flanged males disappears. The males that delay maturation are called “unflanged” males, and they can remain in this state for their entire life. Unflanged males resemble females in their size and appearance and will sneak copulations with females while avoiding the bigger, flanged males. Flanged and unflanged male orangutans represent alternative reproductive strategies, both of which successfully produce offspring (Utami et al. 2002).

## *Gorilla of Africa*

There are several species of gorillas that can be found across Central Africa. Gorilla males, like orangutan males, are about twice the size of female gorillas (Figure 5.43). When on the ground, gorillas use a form of quadrupedalism called **knuckle-walking**, where the fingers are curled under and the weight is carried on the knuckles. Male gorillas have a large sagittal crest and larger canines compared with females. A dult male gorillas are often called “silverbacks” because when they reach about twelve to thirteen years old, the hair on their backs turns silvery gray. Gorillas typically live in groups of one male and several females. Gorillas are considered folivorous, although they can be more frugivorous depending on fruit seasonality (Remis 1997).



Figure 5.43a A female gorilla and her offspring.



Figure 5.43b A silverback male. Male gorillas are about twice the size of females, but also differ from females in having a large sagittal crest, and silver back, which appears as they mature.

## Pan of Africa

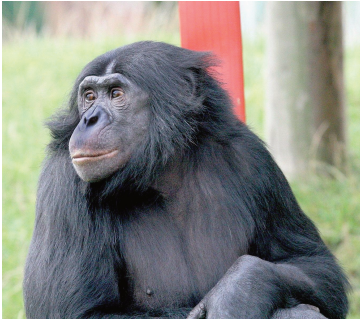


Figure 5.44 Bonobo, *Pan paniscus*. You can see the distinctive hair-part on this bonobo.

The Genus *Pan* includes two species: *Pan troglodytes* (the common chimpanzee) and *Pan paniscus* (the bonobo). These species are separated by the Congo River, with chimpanzees ranging across West and Central Africa and bonobos located in a restricted area south of the Congo River. Chimpanzees and bonobos both have broad, largely frugivorous diets and similar social groups. The two species differ morphologically in that bonobos are slightly smaller, have their hair parted down the middle of their foreheads, and are born with dark faces (Figure 5.44). In contrast, chimpanzees do not have the distinctive parted hair and are born with light faces which darken as they mature (Figure 5.45). Chimpanzees and bonobos live in a grouping called a fission-fusion community, which you will learn more about in Chapter 6. Both species are moderately sexually dimorphic, with males about 20% larger than females. When on the ground, chimpanzees and bonobos knuckle-walk like gorillas do.



Figure 5.45 A common chimpanzee, *Pan troglodytes*, female and her offspring. Note the pink face of the youngest individual. Bonobos are born with dark-skinned faces, but chimpanzees are born with pink faces that darken with age.

## Homo

The last member of the Hominoidea to discuss is our own taxon, *Genus Homo*. Humans differ from apes in many aspects of our morphology, behavior, and life history, all of which you will be learning about in later chapters. One of the objectives of this chapter, however, and of biological anthropology in general, is to understand our place in nature. This means looking for the aspects of human biology that lead us to place humans within the taxonomic diversity we have just discussed. To accomplish this, we not only consider how humans are different from other species but also examine the traits that unite us with the other primates, our similarities—that is our focus here.

There are clear similarities between humans and the other apes in our morphology and life history. Like other hominoids, humans lack a tail and possess upper-body adaptations for brachiation. While our lower body has been modified for a bipedal gait, we are still able to swing from branches or “monkey bars,” or throw a fastball, all thanks to our

mobile shoulder joint. Humans, like other hominoids, also have a Y-5 cusp pattern on our molars. As discussed earlier, all hominoids have an extended life history, taking a long time to grow and develop, and have a long life span. Humans, too, exhibit these same characteristics. Lastly, while humans show a great deal of variation across cultures, many human societies show patterns of female dispersal in which males stay in the group into which they were born while females leave (Burton et al. 1996).

Among the hominoids, humans show particular affinities with other members of the African Clade, *Pan* and *Gorilla*. Humans share over 96% of our DNA with gorillas (Sally et al. 2012), and over 98% with *Pan* (Ebersberger et al. 2002). Even without this strong genetic evidence, the African Clade of hominoids share many morphological similarities. These shared traits include eye sockets that are slightly farther apart and are more square or rounded compared to the closely placed, ovoid eyes of orangutans. Also, the cheekbones of the African clade sweep backward compared to the more flattened orangutan cheekbones. Today, *Pan* and *Gorilla* knuckle-walk when on the ground, and it has been suggested that the last common ancestor of chimpanzees, bonobos, gorillas, and humans shared this trait (Richmond et al. 2001).

Our closest living relatives today are chimpanzees and bonobos. Because of our close relationship, humans share many additional traits in common with *Pan*. Humans, chimpanzees, and bonobos all live in similar social groups that are characterized by territoriality and male cooperation, among other things. Chimpanzee males are well-known to cooperate in hunting, a common trait across human societies as well. As you will learn more about in the next chapter, chimpanzee populations have also been observed to make and use tools for different purposes, not unlike what humans do.

## LEARNING FROM PRIMATES

While primates are fascinating animals in their own right, we study non-human primates in anthropology with the ultimate goal of understanding more about our own biology and evolutionary history. The close relationship between humans and non-human primates makes them excellent for studying humans via **homology**, looking at traits that are shared between two taxa because they inherited the trait from a common ancestor. Consider, for example, the characteristics discussed in the previous section that are shared by humans and *Pan*. Since both taxa exhibit these traits, they are likely *homologous*, meaning these shared traits were probably present in the last common ancestor of humans and *Pan* approximately 6–8 million years ago.

Non-human primates also make excellent comparators for learning about humans via **analogy** (sometimes called convergent evolution, parallel evolution, or homoplasy). Many non-human primates live in environments or social groups similar to those in which our ancestors lived and therefore exhibit similar behavioral and morphological traits as what we see in humans. For example, baboons and humans share the trait of having long legs. In humans, this is because about 1.7 million years ago, our ancestors moved into open savanna habitats, like those baboons live in today, and longer legs enabled them to move over long distances more efficiently. Baboons independently evolved longer arms and legs for the same reason—to be able to cover more ground, more efficiently, in an open habitat. This means that having long legs is an *analogous* trait in baboons and humans—that is, this adaptation evolved independently in the two species but for the same purpose.

## Conclusion

The Order Primates is a diverse and fascinating group of animals united in sharing a suite of characteristics—visual specialization, grasping hands and feet, large brains, and extended life histories—that differentiates us from other groups

of mammals. In this chapter, we surveyed the major taxonomic groups of primates, discussing where humans fit among our close relatives as well as discovering that primates are interesting animals in their own right. We discussed a range of key traits used to distinguish between the many taxa of living primates, including dietary, locomotor, and behavioral characteristics. Because of our long, shared evolutionary history with these animals, non-human primates provide a crucial resource for understanding our current biology. In the next chapter, you will discover the fascinating and complex social behaviors of non-human primates which provide further insight into our evolutionary biology.

## Review Questions

- Why does the field of anthropology, a field dedicated to the study of humans, include the study of non-human animals? What important things can we learn from non-human primates in anthropology?
- One of the important goals of an introductory biological anthropology course is to teach you about your place in nature. What is the full taxonomic classification of humans, and what are some of the traits we have of each of these categories?
- When you have seen primates in person, did you observe any facial expressions, behaviors, or physical traits that seemed familiar to you? If so, which ones and why?
- Why is it important to try to place taxa into a clade classification rather than groupings based on grade? Can you think of an example?
- Draw out a tree showing the major taxonomic group of primates described here, making sure to leave room in between each level. Underneath each taxon, list some of the key features of this group so that you can compare traits between groups.

## Key Terms

**Activity pattern:** Refers to the time of day an animal is typically active.

**African clade:** A grouping that includes gorillas, chimpanzees, bonobos, humans, and their extinct relatives.

**Analogy:** When two or more taxa exhibit similar traits that have evolved independently, the similar traits evolve due to similar selective pressures. (Also sometimes called convergent evolution, parallel evolution, or homoplasy.)

**Arboreal:** A descriptor for an organism that spends most of its time in trees.

**Asian clade:** A grouping that includes orangutans and their extinct relatives.

**Bilophodont:** Molar pattern of cercopithecoid monkeys in which there are usually four cusps that are arranged in a square pattern and connected by two ridges.

**Bipedalism:** Walking on two legs.

**Brachiation:** A form of locomotion in which the organism swings below branches using the forelimbs.



**Bunodont:** Low, rounded cusps on the cheek teeth.

**Canines:** In most primates, these are the longest of the teeth, often conical in shape and used as a weapon against predators or others of their species.

**Cathemeral:** Active throughout the 24-hour period.

**Clade:** A grouping based on ancestral relationships; a branch of the evolutionary tree.

**Cusps:** The bumps on the chewing surface of the premolars and molars, which can be quite sharp in some species.

**Dental formula:** The number of each type of tooth in one quadrant of the mouth, written as number of incisors: canines: premolars: molars.

**Derived trait:** A trait that has been recently modified, most helpful when assigning taxonomic classification.

**Diastema:** A space between the teeth, usually for large canines to fit when the mouth is closed.

**Dichromatic:** Being able to see only blues and greens.

**Diurnal:** Active during the day.

**Dry nose:** The nose and upper lip are separated and the upper lip can move independently; sometimes referred to as a “hairy” or “mobile” upper lip.

**Ethnoprimateology:** A subarea of anthropology that studies the complexities of human-primate relationships in the modern environment.

**Evolutionary trade-off:** When an organism, which is limited in the time and energy it can put into aspects of its biology and behavior, is shaped by natural selection to invest in one adaptation at the expense of another.

**Faunivorous:** Having a diet consisting of animal matter: insects, eggs, lizards, etc.

**Frugivore:** Having a diet consisting primarily of fruit.

**Folivore:** Having a diet consisting primarily of leaves.

**Fovea:** A depressed area in the retina at the back of the eye containing a concentration of cells that allow us to focus on objects very close to our face.

**Generalized trait:** A trait that is useful for a wide range of tasks.

**Grade:** A grouping based on overall similarity in lifestyle, appearance, and behavior.

**Grooming claw:** A claw present on the second pedal digit in strepsirrhines.

**Gummivore:** Having a diet consisting primarily of gums and saps.

**Heterodont:** Having different types of teeth.

**Homodont:** Having only one type of tooth.

**Homology:** When two or more taxa share characteristics because they inherited them from a common ancestor.

**Hone:** When primates sharpen their canines by wearing them on adjacent teeth.

**Incisors:** The spatula-shaped teeth at the front of the mouth.

**Insectivore:** Having a diet consisting primarily of insects.

**Ischial callosities:** A flattened area of the ischium on the pelvis over which calluses form; functioning as seat pads for sitting and resting atop branches.

**Knuckle-walking:** A form of quadrupedal movement used by *Gorilla* and *Pan* when on the ground, where the front limbs are supported on the knuckles of the hands.

**Life history:** Refers to an organism's pace of growth, reproduction, lifespan, etc.

**Locomotion:** How an organism moves around.

**Male bimaturism:** Refers to the alternative reproductive strategies in orangutans in which males can delay maturation, sometimes indefinitely, until a fully mature, "flanged" male disappears.

**Molars:** The largest teeth at the back of the mouth; used for chewing; in primates, these teeth usually have between three and five cusps.

**Monochromatic:** Being able to see only in shades of light to dark, no color.

**Monomorphic:** When males and females of a species do not exhibit significant sexual dimorphism.

**Natal coat:** Refers to the contrasting fur color of baby leaf monkeys compared to adults.

**Nocturnal:** Active at night.

**Olecranon process:** Bony projection at the elbow end of the ulna.

**Opposable thumb** or **opposable big toe:** Having thumbs and toes that go in a different direction from the rest of the fingers, allows for grasping with hands and feet.

**Pentadactyly:** Having five digits or fingers and toes.

**Polymorphic color vision:** A system in which individuals of a species vary in their abilities to see color. In primates, it refers to males being dichromatic and females being either trichromatic or dichromatic.

**Postorbital bar:** A bony ring that surrounds the eye socket, open at the back.

**Postorbital closure/plate:** A bony plate that provides protection to the side and back of the eye.

**Prehensile tail:** A tail that is able to hold the full body weight of an organism, which often has a tactile pad on the underside of the tip for improved grip.

**Premolars:** Smaller than the molars, used for chewing. In primates, these teeth usually have one or two cusps.

**Primitive trait:** A trait that has been inherited from a distant ancestor.

**Quadrupedalism:** Moving around on all fours.

**Rhinaria:** Wet noses; produced when the nose is connected to the upper lip.

**Sagittal crest:** A bony ridge along the top/middle of the skull, used for attachment of chewing muscles.

**Scent marking:** The behavior of rubbing scent glands or urine onto objects as a way of communicating with others.

**Semi-brachiation:** A form of locomotion in which an organism swings below branches using a combination of forelimbs and prehensile tail.

**Sexually dimorphic:** When a species exhibits sex differences in morphology, behavior, hormones, and/or coloration.

**Shearing crests:** Sharpened ridges that connect cusps on a bilophodont molar.

**Specialized trait:** A trait that has been modified for a specific purpose.

**Styloid process of ulna:** A bony projection of the ulna at the end near the wrist.

**Tactile pads:** Sensitive skin at the fingertips for sense of touch. Animals with a prehensile tail have a tactile pad on the underside of the tail as well.

**Tapetum lucidum:** Reflecting layer at the back of the eye that magnifies light.

**Terrestrial:** Spending most of the time on the ground.

**Tetrachromatic:** Having the ability to see reds, yellows, blues, greens, and ultraviolet.

**Tooth comb or dental comb:** A trait of the front, lower teeth of strepsirrhines in which, typically, the four incisors and canines are long and thin and protrude outward.

**Trichromatic color vision:** Being able to distinguish yellows and reds in addition to blues and greens.

**Vertical clinging and leaping:** A locomotor pattern in which animals are oriented upright while clinging to vertical branches, push off with hind legs, and land oriented upright on another vertical branch.

**Y-5 molar:** Molar cusp pattern in which five molar cusps are separated by a “Y”-shaped groove pattern.

## About the Author

### Stephanie Etting

Sacramento City College



Stephanie Etting

Dr. Stephanie Etting became hooked on biological anthropology as a freshman at UC Davis when she took the “Introduction to Biological Anthropology” course. She obtained her Ph.D. in anthropology in 2011 from UC Davis, where she studied anti-predator behavior toward snakes in rhesus macaques, squirrel monkeys, and black-and-white ruffed lemurs. While in graduate school, Dr. Etting discovered her love of teaching and, since finishing her dissertation, has taught at UC Berkeley; Sonoma State University; UC Davis; California State University, Sacramento; and Sacramento City College. In addition to her interests in primate behavior, Dr. Etting is also very interested in primate evolution and functional anatomy.

## For Further Exploration

Animal Diversity Web: <https://animaldiversity.org/accounts/Primates/specimens/> This website is hosted by the Zoology Department at the University of Michigan. It has photographs of skulls, teeth, hands, arms, and feet of many primate species.

eSkeletons: <http://www.eskeletons.org> This website is hosted by the Department of Anthropology at University of Texas, Austin. It is an interactive website where you can compare specific bones from different species of primates.

Fleagle, John G. 2013. *Primate Adaptation and Evolution*. Third edition. San Diego: Academic Press.

Fuentes, Agustín, and Kimberley J. Hockings. 2010. "The Ethnoprimateological Approach in Primatology." *American Journal of Primatology* 72 (10): 841–847.

Rowe, Noel. 1996. *Pictorial Guide to the Living Primates*. Charlestown, VA: Pogonias Press.

Whitehead, Paul F., William K. Sacco, and Susan B. Hochgraf. 2005. *A Photographic Atlas for Physical Anthropology*. Englewood, CO: Morton Publishing.

## References

Balolia, Katharine L., Christophe Soligo, and Bernard Wood. 2017. "Sagittal Crest Formation in Great Apes and Gibbons." *Journal of Anatomy* 230 (6): 820–832.

Bininda-Emonds, Olaf R., Marcel Cardillo, Kate E. Jones, Ross D. E. MacPhee, Robin M. D. Beck, Richard Grenyer, Samantha A. Price, Rutger A. Vos, John L. Gittleman, and Andy Purvis. 2007. "The Delayed Rise of Present-Day Mammals." *Nature* 446 (7,135): 507–512.

Burton, Michael L., Carmella C. Moore, John W. M. Whiting, A. Kimball Romney, David F. Aberle, Juan A. Barcelo, Malcolm M. Dow, et al.. 1996. "Regions Based on Social Structure." *Current Anthropology* 37 (1): 87–123.

Changizi, Mark A., Qiong Zhang, and Shinsuke Shimojo. 2006. "Bare Skin, Blood and the Evolution of Primate Colour Vision." *Biology Letters* 2 (2): 217–221.

Chivers, David J., and C. M. Hladik. 1980. "Morphology of the Gastrointestinal Tract in Primates: Comparisons With Other Mammals in Relation to Diet." *Journal of Morphology* 166 (3): 337–386.

Clutton-Brock, T. H., and Paul H. Harvey. 1980. "Primates, Brains, and Ecology." *Journal of Zoology* 190 (3): 309–323.

Dominy, Nathaniel J., and Peter W. Lucas. 2001. "Ecological Importance of Trichromatic Vision to Primates." *Nature* 410 (6,826): 363–366.

Dunbar, Robin I. M. 1998. "The Social Brain Hypothesis." *Evolutionary Anthropology* 6 (5): 178–190.

Ebersberger, Ingo, Dirk Metzler, Carsten Schwarz, and Svante Pääbo. 2002. "Genomewide Comparison of DNA Sequences Between Humans and Chimpanzees." *American Journal of Human Genetics* 70 (6): 1,490–1,497.

Jameson, Natalie M., Zhoucheng Hou, Kirsten N. Sterner, Amy Weckle, Morris Goodman, Michael E. Steiper, and Derek Wildman. 2011. "Genomic Data Reject the Hypothesis of a Prosimian Primate Clade." *Journal of Human Evolution* 61 (3): 295–305.

Kawamura, Shoji, Chihiro Hiramatsu, Amanda D. Melin, Colleen M. Schaffner, Filippo Aureli, and Linda Marie Fedigan.

2012. "Polymorphic Color Vision in Primates: Evolutionary Considerations." In *Post-Genome Biology of Primates*, edited by H. Irai, H. Imai, and Y. Go, 93–120. Tokyo: Springer.
- Matsui, Atsushi, Felix Rakotondraparany, Isao Munechika, Masami Hasegawa, and Satoshi Horai. 2009. "Molecular Phylogeny and Evolution of Prosimians Based on Complete Sequences of Mitochondrial DNAs." *Gene* 441 (1–2): 53–66.
- Morgan, M. J., A. Adam, and J. D. Mollon. 1992. "Dichromats Detect Colour-Camouflaged Objects That Are Not Detected by Trichromats." *Proceedings of the Royal Society London B: Biological Sciences* 248 (1,323): 291–295.
- Nater, Alexander, Maja P. Mattle-Greminger, Anton Nurcahyo, Matthew G. Nowak, Marc De Manuel, Tariq Desai, Colin Groves, et al. 2017. "Morphometric, Behavioral, and Genomic Evidence for a New Orangutan Species." *Current Biology* 27 (22): 3,487–3,498.
- Pessoa, Daniel Marques Almeida, Rafael Maia, Rafael Cavalcanti de Albuquerque Ajuz, Pedro Zurvaino Palmeiro Melo Rosa De Moraes, Maria Helena Constantino Spyrides, and Valdir Filgueiras Pessoa. 2014. "The Adaptive Value of Primate Color Vision for Predator Detection." *American Journal of Primatology* 76 (8): 721–729.
- Pozzi, Luca, Jason A. Hodgson, Andrew S. Burrell, Kirstin N. Sterner, Ryan L. Raaum, and Todd R. Disotell. 2014. "Primate Phylogenetic Relationships and Divergence Dates Inferred From Complete Mitochondrial Genomes." *Molecular Phylogenetics and Evolution* 75: 165–183.
- Regan, B. C., C. Julliot, B. Simmen, F. Viénot, P. Charles-Dominique, and J. D. Mollon. 2001. "Fruits, Foliage and the Evolution of Primate Colour Vision." *Philosophical Transactions of the Royal Society of London B: Biological Sciences* 356 (1,407): 229–283.
- Remis, Melissa J. 1997. "Western Lowland Gorillas (*Gorilla gorilla gorilla*) as Seasonal Frugivores: Use of Variable Resources." *American Journal of Primatology* 43 (2): 87–109.
- Richmond, Brian G., David R. Begun, and David S. Strait. 2001. "Origin of Human Bipedalism: The Knuckle-Walking Hypothesis Revisited." *American Journal of Physical Anthropology* 116 (S33): 70–105.
- Robson, Shannen L., Carel P. van Schaik, and Kristen Hawkes. 2006. "The Derived Features of Human Life History." In *The Evolution of Human Life History*, edited by Richard R. Paine and Kristen Hawkes, 17–44. Santa Fe: SAR Press.
- Sally, Aylwyn, Julien Y. Dutheil, LaDeana W. Hillier, Gregory E. Jordan, Ian Goodhead, Javier Herrero, Asger Hobolth, et al. 2012. "Insights Into Hominid Evolution From the Gorilla Genome Sequence." *Nature* 483 (7,388): 169–175.
- Schneider, Horacio, and Iracilda Sampaio. 2015. "The Systematics and Evolution of New World Primates: A Review." *Molecular Phylogenetics and Evolution* 82 (B): 348–357.
- Setchell, Joanna M., Phyllis C. Lee, E. Jean Wickings, and Alan F. Dixson. 2001. "Growth and Ontogeny of Sexual Size Dimorphism in the Mandrill (*Mandrillus sphinx*)." *American Journal of Physical Anthropology* 115 (4): 349–360.
- Silk, Joan B., Jacintha C. Beehner, Thore J. Bergman, Catherine Crockford, Anne L. Engh, Liza R. Moscovice, Roman M. Wittig, Robert M. Seyfarth, and Dorothy L. Cheney. 2009. "The Benefits of Social Capital: Close Social Bonds Among Female Baboons Enhance Offspring Survival." *Proceedings of the Royal Society of London B: Biological Sciences* 276 (1,670): 3,099–3,104.
- Utami, Sri Suci, Benoît Goossens, Michael W. Bruford, Jan R. de Ruiter, and Jan A. R. A. M. van Hooff. 2002. "Male Bimaturism and Reproductive Success in Sumatran Orang-utans." *Behavioral Ecology* 13 (5): 643–652.
- Vasey, Natalie. 2006. "Impact of Seasonality and Reproduction on Social Structure, Ranging Patterns, and Fission–Fusion

Social Organization in Red Ruffed Lemurs.” In *Lemurs: Ecology and Adaptation*, edited by Lisa Gould and Michelle L. Sauter, 275–304. Boston: Springer.

Wright, Patricia C. 1999. “Lemur Traits and Madagascar Ecology: Coping With an Island Environment.” *American Journal of Physical Anthropology* 110 (S29): 31–72.

## Acknowledgements

The author would very much like to thank the editors for the opportunity to contribute to this textbook, along with two anonymous reviewers who provided useful feedback on earlier drafts of this chapter. She would also like to thank Karin Enstam Jaffe for her support and encouragement during the writing of this chapter. Most of all, the author would like to thank all of the Introduction to Biological Anthropology students that she has had over the years who have listened to her lecture endlessly on these animals that she finds so fascinating and who have helped her to hone her pedagogy in a field that she loves.

## Figure Attributions

Figure 5.1 Post-orbital bar/Post-orbital closure a derivative work original to *Explorations: An Open Invitation to Biological Anthropology* by Stephanie Etting is under a CC BY-NC-SA 4.0 License. [Includes *Otolemur crassicaudatus* (greater galago) by Animal Diversity Web, CC BY-NC-SA 3.0; *Macaca fascicularis* (long-tailed macaque) by Animal Diversity Web, CC BY-NC-SA 3.0.]

Figure 5.2 PrimateFeet by Richard Lydekker, original from *The Royal Natural History* 1:15 (1893), is in the public domain.

Figure 5.3 Primate suite of traits table by Stephanie Etting original to *Explorations: An Open Invitation to Biological Anthropology* is under a CC BY-NC 4.0 License.

Figure 5.4 Ha,ha,ha .... (14986571843) by Rolf Dietrich Brecher from Germany is under a CC BY-SA 2.0 License.

Figure 5.5 Four types of human teeth original to *Explorations: An Open Invitation to Biological Anthropology* by Mary Nelson is under a CC BY-NC 4.0 License.

Figure 5.6a Frugivore characteristics original to *Explorations: An Open Invitation to Biological Anthropology* by Mary Nelson is under a CC BY-NC 4.0 License.

Figure 5.6b Insectivore characteristics original to *Explorations: An Open Invitation to Biological Anthropology* by Mary Nelson is under a CC BY-NC 4.0 License.

Figure 5.6c Folivore characteristics original to *Explorations: An Open Invitation to Biological Anthropology* by Mary Nelson is under a CC BY-NC 4.0 License.

Figure 5.7 Vertical clinger and leaper locomotion original to *Explorations: An Open Invitation to Biological Anthropology* by Mary Nelson is under a CC BY-NC 4.0 License.

Figure 5.8 Terrestrial quadrupedal primate original to *Explorations: An Open Invitation to Biological Anthropology* by Mary Nelson is under a CC BY-NC 4.0 License.



Figure 5.9 Brachiator original to Explorations: An Open Invitation to Biological Anthropology by Mary Nelson is under a CC BY-NC 4.0 License.

Figure 5.10 Ateles-fusciceps 54724770b by LeaMaimone is under a CC BY 2.5 License.

Figure 5.11: Primate taxonomy chart a derivative work original to Explorations: An Open Invitation to Biological Anthropology by Stephanie Etting is under a CC BY-NC 4.0 License. [Includes Lemur catta Linnaeus, 1759 by Roberto Díaz Sibaja, CC BY 3.0; Lorisoidea original to Explorations: An Open Invitation to Biological Anthropology by Katie Nelson, CC BY-NC 4.0; Tarsiiformes original to Explorations: An Open Invitation to Biological Anthropology by Mary Nelson, CC BY-NC 4.0; Cebinae Bonaparte, 1831 by Sarah Werning, CC BY 3.0; Colobus guereza Ruppell, 1835 by Yan Wong from drawing in The Century Dictionary (1911) (flipped horizontally), designated to the public domain (CC0); Papio cynocephalus by Owen Jones, designated to the public domain (CC0); animals silhouette wolf elephant (2755766) by mohamed\_hassan, Pixabay License.]

Figure 5.12 Grades vs. clades comparison a derivative work original to Explorations: An Open Invitation to Biological Anthropology by Stephanie Etting is under a CC BY-NC 4.0 License. [Includes Orangutan on a tree (Unsplash) by Dawn Armfield darmfield, public domain (CC0 1.0); Gorilla Profile (17997840570) by Charlie Marshall from Bristol UK, United Kingdom, modified (cropped), CC BY 2.0 License; Chimpanzee (14679767561) by Magnus Johansson, modified (cropped), CC BY-SA 2.0; Pointing finger (1922074) by truthseeker08, Pixabay License.]

Figure 5.13 Lemur catta toilet claw by Alex Dunkel (Maky) is used under a CC BY 3.0 Licesnse.

Figure 5.14 Extant Strepsirrhini a derivative work by Mark Dumont is under a CC BY-SA 3.0 License. [Includes Katta család by Veszprémi Állatkert, CC BY-SA 3.0; Aye-aye at night in the wild in Madagascar by Frank Vassen, CC BY 2.0; Diademed ready to push off by Michael Hogan, designated to the public domain (CC0); Juvenile Black-and-White Ruffed Lemur, Mantadia, Madagascar by Frank Vassen, CC BY 2.0; Microcebus murinus -Artis Zoo, Amsterdam, Netherlands-8a by Arjan Haverkamp, CC BY 2.0; Slow Loris by Jmiksaneek, CC BY-SA 3.0; Slender Loris by Kalyan Varma (Kalyanvarma), CC BY-SA 4.0; Garnett's Galago (Greater Bushbaby) by Mark Dumont, CC BY 2.0].

Figure 5.15 Lemur catta toothcomb by Alex Dunkel (Maky) is used under a CC BY 3.0 licesnse.

Figure 5.16 Geographic distribution of living strepsirrhines original to Explorations: An Open Invitation to Biological Anthropology by Elyssa Ebding at GeoPlace, California State University, Chico is under a CC BY-NC 4.0 License.

Figure 5.17 Indri indri 0003 by Christophe Germain is used under a CC BY-SA 4.0 License.

Figure 5.18 Nycticebus coucang 002 by David Haring / Duke Lemur Center is used under a CC BY-SA 3.0 License.

Figure 5.19 Strepsirrhines at a glance a derivative work original to Explorations: An Open Invitation to Biological Anthropology by Stephanie Etting is under a CC BY-NC-SA 4.0 License. [Includes Ringtailed Lemurs in Berenty by David Dennis, CC BY-SA 2.0; Komba ušatá by Petr Hamerník, CC BY-SA 4.0.]

Figure 5.20 Suborders at a glance a derivative work original to Explorations: An Open Invitation to Biological Anthropology by Stephanie Etting is under a CC BY-NC-SA 4.0 License. [Includes Black-and-White Ruffed Lemur, Mantadia, Madagascar by Frank Vassen, CC BY 2.0; Crab eating macaque face by Bruce89, CC BY-SA 4.0.]

Figure 5.21 Tarsier Sanctuary, Corella, Bohol (2052878890) by yeowatzup is used under a CC BY 2.0 License.

Figure 5.22 Infraorder Tarsiiformes of Asia map original to Explorations: An Open Invitation to Biological Anthropology by Elyssa Ebding at GeoPlace, California State University, Chico is under a CC BY-NC 4.0 License.

Figure 5.23 Tarsier skull by Andrew Bardwell from Cleveland, Ohio, USA is used under a CC BY-SA 2.0 License.

Figure 5.24 Tarsiers at a glance table original to Explorations: An Open Invitation to Biological Anthropology by Stephanie Etting is under a CC BY-NC 4.0 License.

Figure 5.25 Infraorder Platyrrhini map original to Explorations: An Open Invitation to Biological Anthropology by Elyssa Ebding at GeoPlace, California State University, Chico is under a CC BY-NC 4.0 License.

Figure 5.26 CARABLANCA – panoramio by Manuel Velazquez is used under a CC BY 3.0 License.

Figure 5.27 Callitrichinae genus a derivative work by Miguelrangeljr is used under a CC BY-SA 3.0 License. [Includes Weißbüschelaffe\_(Callithrix\_jacchus) by Raymond, CC BY-SA 4.0; Leontopithecus chrysomelas (portrait) by Hans Hillewaert, CC BY-SA 4.0; Emperor\_Tamarin\_portrait\_2\_edit1 by Brocken Inaglor, CC BY-SA 4.0; Dvärgsilkeabe\_Callithrix\_pygmaea by Malene Thyssen (User Malene), GNU Free Documentation License; Mico\_argentatus\_(portrait) by Hans Hillewaert, CC BY-SA 4.0; Titi Monkey by Jeff Kubina. CC BY-SA 2.0]. ]

Figure 5.28 Atelidae Family a derivative work by User:Miguelrangeljr is used under a CC BY-SA 3.0 License. [Includes Ateles marginatus (Sao Paulo zoo) by Miguelrangeljr, CC BY-SA 3.0; Alouatta caraya male by Miguelrangeljr, CC BY-SA 3.0; Brachyteles hypoxanthus2 by Paulo B. Chaves, CC BY 2.0; Lagothrix lagotricha (walking) by Hans Hillewaert, CC BY-SA 3.0.]

Figure 5.29 Platyrrhini at a glance table original to Explorations: An Open Invitation to Biological Anthropology by Stephanie Etting is under a CC BY-NC 4.0 License.

Figure 5.30 Wolf's Guenon Picking Up Food (19095137693) by Eric Kilby from Somerville, MA, USA, is used under a CC BY-SA 2.0 License.

Figure 5.31 Platyrrhini vs. Catarrhini dentition a derivative work original to Explorations: An Open Invitation to Biological Anthropology by Stephanie Etting is under a CC BY-NC-SA 4.0 License. [Includes Cebus apella (brown capuchin) at Animal Diversity Web by Phil Myers, Museum of Zoology, University of Michigan-Ann Arbor, CC BY-NC-SA 3.0; Lophocebus albigena (gray-cheeked mangabey) at Animal Diversity Web by Phil Myers, Museum of Zoology, University of Michigan-Ann Arbor, CC BY-NC-SA 3.0; Symphalangus syndactylus (siamang) at Animal Diversity Web by Phil Myers, Museum of Zoology, University of Michigan-Ann Arbor, CC BY-NC-SA 3.0.]

Figure 5.32 Sulawesi tarsier DSCN0572 v1 by T. R. Shankar Ramanis used under a CC BY-SA 3.0 License.

Figure 5.33 Superfamily Cercopithecoidea map original to Explorations: An Open Invitation to Biological Anthropology by Elyssa Ebding at GeoPlace, California State University, Chico is under a CC BY-NC 4.0 License.

Figure 5.34 Silverleaf Monkey (Kuala Lumpur) by Andrea Lai from Auckland, New Zealand is used under a CC BY 2.0 License.

Figure 5.35 Proboscis monkey (Nasalis larvatus) male head by Charles J Sharp creator QS:P170,Q54800218 is used under a CC BY-SA 4.0 License.

Figure 5.36 Bonnet macaque DSC 0893 by T. R. Shankar Raman is used under a CC BY-SA 4.0 License.

Figure 5.37 Macaque India 4 by Thomas Schoch is used under a CC BY-SA 3.0 License.

Figure 5.38 Superfamily Hominoidea map original to Explorations: An Open Invitation to Biological Anthropology by Elyssa Ebding at GeoPlace, California State University, Chico is under a CC BY-NC 4.0 License.

Figure 5.39: Quadrupedalism vs. Brachiation table original to Explorations: An Open Invitation to Biological Anthropology by Stephanie Etting is under a CC BY-NC 4.0 License.

Figure 5.40 Catarrhini at a glance a derivative work original to Explorations: An Open Invitation to Biological

Anthropology by Stephanie Etting is under a CC BY-NC 4.0 License. [Includes Dusky leaf monkey by Robert Pollai, CC BY 3.0 AT; Male Bornean Orangutan – Big Cheeks by Eric Kilby from Somerville, MA, USA, CC BY-SA 2.0.]

Figure 5.41 Shout (373310729) by su-neko is used under a CC BY-SA 2.0 License.

Figure 5.42a Orang Utan (*Pongo pygmaeus*) female with baby (8066259067) by Bernard DUPONT from FRANCE is used under a CC BY-SA 2.0 Licence.

Figure 5.42b Orangutan -Zoologischer Garten Berlin-8a by David Arvidsson is used under a CC BY 2.0 License.

Figure 5.43a Enzo naomi echo by Zoostar is used under a CC BY 3.0 License.

Figure 5.43b Male gorilla in SF zoo by Brocken Inaglory is used under a CC BY-SA 3.0 License.

Figure 5.44 Bonobo male Jasongo 15yo Twycross 582a (2014 11 14 01 04 18 UTC) by William H. Calvin is used under a CC BY-SA 4.0 License.

Figure 5.45 Chimpanzees in Uganda (5984913059) by USAID Africa Bureau uploaded by Elitre is in the public domain.